



# PPE & Welding Accessories

PERSONAL PROTECTION  
WELDING TOOLS AND ACCESSORIES  
SPECIAL PROCESS EQUIPMENT





# *World*

Since 1904, ESAB has been both a pioneer and leader in welding and cutting development technology. Today ESAB combines world leadership with global applications expertise.



# *leader*

**in welding and cutting technology and systems**

With over 100 years of experience, and a presence in over 80 countries worldwide, ESAB is probably the most recognised brand in welding and cutting with a product portfolio, which includes:

**Standard Welding and Cutting Equipment**

**Automatic Equipment**

**Automated Cutting Equipment**

**Welding Consumables**

**Personal Protective Equipment (PPE)**

**Welding Accessories**

By continuously improving and developing our products and manufacturing processes, we meet the challenges of technological advance in every sector and market we operate in. Delivering quality products and services remains at the heart of everything we do across all our global sales and product operations.

# Contents



## Personal Protection

Helmets, Masks and Screens	4-38
Filter & Spatter Lenses	39
Hard Hats & Hearing Protection	40
Respiratory Equipment	41-49
Spectacles, Goggles & Visors	50-53
Welding Curtains	54-55
Welding Blankets	56-57
Welding Clothing and Coveralls	58-60
Head Protection	61
Welding Gloves	62-65
Safety Footwear	66-68



## Welding Tools & Accessories

Cables, Connectors and Electrode Holders	70-73
Clamps	73-75
Anti Spatter	76-77
Chemical Sundries and Indicators	77-78
Chipping Hammers	79-80
Fillet Gauges	80-81
Small Tools	81-83
Cylinder Trolleys	84



## Special Process Equipment

Drying Equipment	86-91
Tungsten Grinders	92-94
Tungsten Electrodes	94-95
Gouging Torches and Spares	96-99
Fume Extraction Units	100



# Personal Protection

ESAB offer a comprehensive range of Personal Protection Equipment, covering everything from head to foot, for both welding and cutting and general engineering applications. All ESAB products conform to all relevant EU legislation and standards.

As Health and Safety Standards improve year on year, so does ESAB's commitment to providing a product portfolio capable of meeting the ever increasing demands of the markets we serve. As you would expect from a leading supplier of welding and cutting solutions, the ESAB product range is second to none for quality and reliability.



# Helmets, Masks & Screens

## New-Tech™ Family

The New-Tech series of auto darkening welding helmets features the latest technology. All four models are very lightweight and well balanced. The head gear can be set to fit each individual user for maximum comfort. The New-Tech helmets offer a wide viewing area, giving the welder a feeling of increased space awareness. The helmet shell is designed to give maximum protection to the face but also to the neck and ears. The area in front of the mouth is made larger to ensure a good flow of fresh air and low levels of Carbon Dioxide. The cartridges are powered by solar cells and automatically activated by daylight, so there is no need to switch on or off. All helmets are CE (EN 349 and EN 175) approved.



The New-Tech welding helmets are extremely versatile, and can be used in combination with ESAB respiratory equipment, hard hats & internal grinding visors.

- New-Tech prepared for fresh air units
- New-Tech combined with hard hat
- New-Tech with internal visor prepared for fresh air
- New-Tech with hard hat prepared for fresh air

See pages 8-9 for further information.



# Helmets, Masks & Screens



## New-Tech™ 6-13 ADC



The New-Tech 6-13 can be used for almost any application. The shade level can be adjusted from DIN 6 to DIN 13, making this helmet very versatile. All settings are made from the outside of the helmet. The helmet features a grinding mode, where the cartridge can be switched off for grinding, there is also a sensitivity and delay function. The New-Tech 6-13 is equipped with ADC technology which will ensure a solid shade level even when viewing the lens at an angle, i.e. positional welding. The unique silver gloss finish on the exterior shell of the New-Tech helps to reflect heat and increases the helmets resistance to high temperatures. This also helps to reduce temperature build up within the helmet.

New-Tech 6-13 ADC

0700 000 280

## New-Tech™ 9-13 ADC



The New-Tech 9-13 ADC offers the latest ADC-technology which will ensure a solid shade level even when viewing the lens at an angle, i.e. positional welding. The settings, such as shade level DIN 9 to 13, sensitivity and delay, are made from the outside of the helmet. The New-Tech 9-13 is suitable for almost all applications, TIG, MIG/MAG, MMA and gas welding/cutting. The unique silver gloss finish on the exterior shell of the New-Tech helps to reflect heat and increases the helmets resistance to high temperatures. This also helps to reduce temperature build up within the helmet.

New-Tech 9-13 ADC

0700 000 281

## New-Tech™ 9-13



The New-Tech 9-13 offers step less setting of the shade level between DIN 9 and 13. The settings, including sensitivity, are made from the inside of the helmet.

New-Tech 9-13

0700 000 282

## New-Tech™ 11



The New-Tech 11 is a single shade helmet. When activated by the arc the shade goes to DIN 11. This helmet is suitable for maintenance and repair work where mainly MMA and/or MIG/MAG welding is used.

New-Tech 11 helmet

0700 000 283

# Helmets, Masks & Screens



## Spares for New-Tech™ 6-13 ADC (Fig 1)

1	Helmet Shell Silver New-Tech 6-13 / 9-13 ADC	0700 000 210
2	Cartridge New-Tech 6-13 ADC	0700 000 200
3	Adjustment knob kit	0700 000 223
4	Front Cover Lens New-Tech	0700 000 227
4	Front Cover Lens CR39 New-Tech	0701 416 354
5	Supporting Frame New-Tech	0700 000 220
6	Metal Locking Spring New-Tech	0700 000 221
7	Inside Cover Lens New-Tech	0700 000 228
8	Sweat Band New-Tech	0700 000 226
9	Headgear Complete New-Tech	0700 000 222
*	Fresh Air mounting kit for New-Tech	0700 002 047

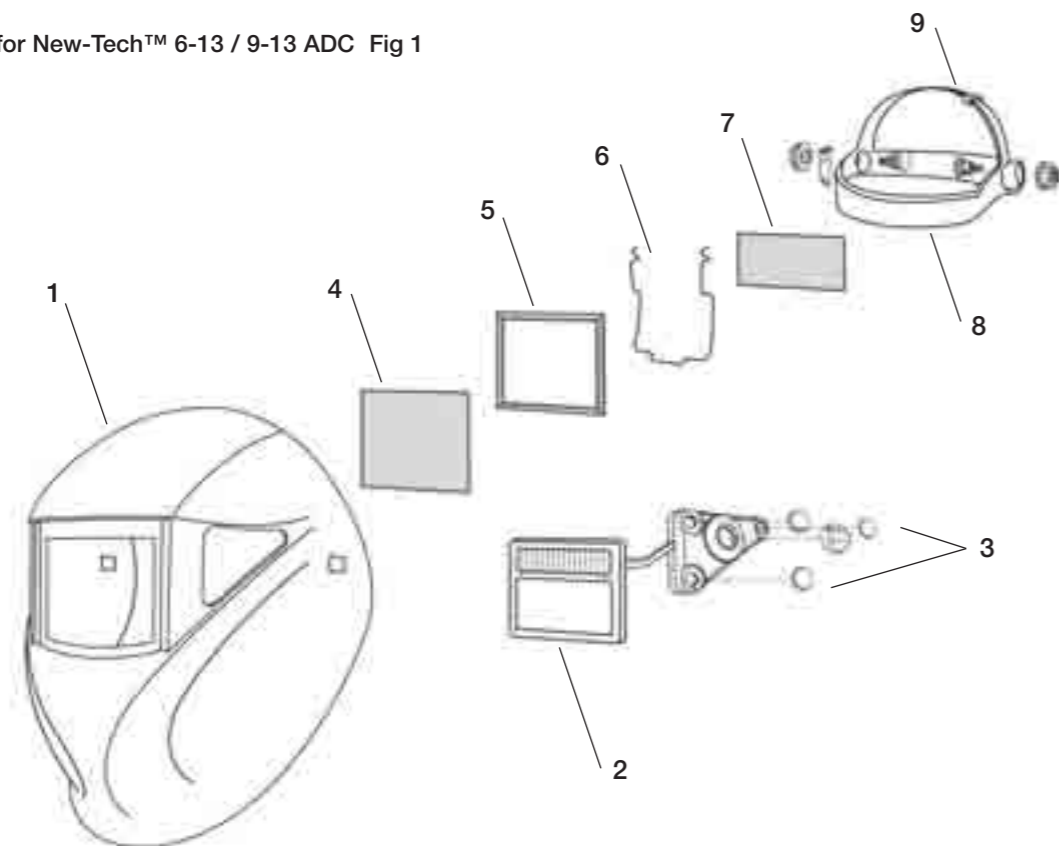
\* Not shown

## Spares for New-Tech™ 9-13 ADC (Fig 1)

1	Helmet Shell Silver New-Tech 9-13 / 6-13 ADC	0700 000 210
2	Cartridge New-Tech 9-13 ADC	0700 000 201
3	Adjustment knob kit	0700 000 223
4	Front Cover Lens New-Tech	0700 000 227
4	Front Cover Lens CR39 New-Tech	0701 416 354
5	Supporting Frame New-Tech	0700 000 220
6	Metal Locking Spring New-Tech	0700 000 221
7	Inner Cover Lens New-Tech	0700 000 228
8	Sweat Band New-Tech	0700 000 226
9	Headgear Complete New-Tech	0700 000 222
*	Fresh Air mounting kit for New-Tech	0700 002 047

\* Not shown

Spares for New-Tech™ 6-13 / 9-13 ADC Fig 1



# Helmets, Masks & Screens

## Spares for New-Tech™ 9-13 (Fig 2)

1	Helmet Shell Black New-Tech 9-13 / 11	0700 000 212
2	Cartridge for New-Tech 9-13	0700 000 202
3	Front Cover Lens New-Tech	0700 000 227
3	Front Cover Lens CR39 New-Tech	0701 416 354
4	Supporting Frame New-Tech	0700 000 220
5	Metal Locking Spring New-Tech	0700 000 221
6	Inside Cover Lens New-Tech	0700 000 228
7	Sweat Band New-Tech	0700 000 226
8	Headgear Complete New-Tech	0700 000 222
*	Fresh Air mounting kit for New-Tech	0700 002 047

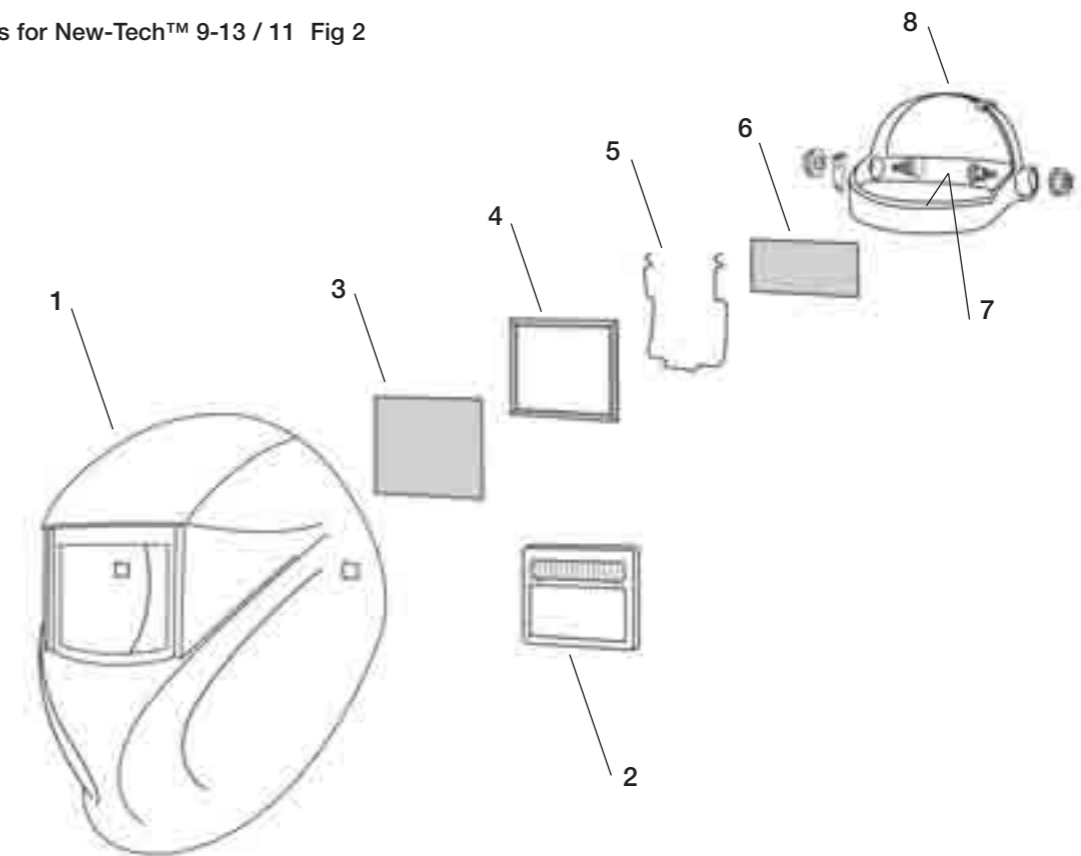
\* Not shown

## Spares for New-Tech™ 11 (Fig 2)

1	Helmet Shell Black New-Tech 11 / 9-13	0700 000 212
2	Cartridge New-Tech 11	0700 000 203
3	Front Cover Lens New-Tech	0700 000 227
3	Front Cover Lens CR39 New-Tech	0701 416 354
4	Supporting Frame New-Tech	0700 000 220
5	Metal Locking Spring New-Tech	0700 000 221
6	Inside Cover Lens New-Tech	0700 000 228
7	Sweat Band New-Tech	0700 000 226
8	Headgear Complete New-Tech	0700 000 222
*	Fresh Air mounting kit for New-Tech	0700 002 047

\* Not shown

Spares for New-Tech™ 9-13 / 11 Fig 2





# Helmets, Masks & Screens



## New-Tech™ Combinations



### New-Tech™ Helmets with Fresh air

All New-Tech welding helmets can be used in combination with Air 160, Air 200 and compressed air units. The helmets are delivered fully assembled, incl. flame resistant head and face seal and air duct. Follow three simple steps to make up your combination: **1.** Select the New-Tech helmet package that you require. **2.** Select the hose kit you require. **3.** Select the air unit your require.

New-Tech 6-13 ADC prepared for fresh air	<b>0700 000 284</b>
New-Tech 9-13 ADC prepared for fresh air	<b>0700 000 285</b>
New-Tech 9-13 prepared for fresh air	<b>0700 000 286</b>
New-Tech 11 prepared for fresh air	<b>0700 000 287</b>



### New-Tech™ with Hard Hat

By removing the head harness and replacing it with a hard hat adapter (0700 000 230) the New-Tech can be fitted on to ESAB's protective helmet. The combination is very well balanced and comfortable to wear. The New-Tech helmet can be detached and reattached in a second. The specially designed hard hat meets the highest standards and it's equipped with ratchet adjustment. **1.** Select the New-Tech helmet. **2.** Select the hard hat adapter. **3.** Select the hard hat.

New-Tech 6-13 ADC	<b>0700 000 280</b>
New-Tech 9-13 ADC	<b>0700 000 281</b>
New-Tech 9-13	<b>0700 000 282</b>
New-Tech 11	<b>0700 000 283</b>
Hard hat adapter for New-Tech	<b>0700 000 230</b>
Hard hat Yellow	<b>0700 000 052</b>
Hard hat White	<b>0700 000 135</b>
Hard hat Blue	<b>0700 000 136</b>
Hard hat Green	<b>0700 000 137</b>
Hard hat Red	<b>0700 000 138</b>



### New-Tech™ with Internal Visor

The New-Tech with internal visor is delivered with an air fed grade B impact protection grinding visor complete with a face and head seal. The grinding visor can be fitted in any of the standard New-Tech helmets and can be combined with either the Air 160, Air 200 or compressed air respiratory systems. This would be the ideal system for all applications involved in welding fabrication. One head system for welding and grinding. Follow three simple steps to make up your combination: **1.** Select the New-Tech helmet package that you require. **2.** Select the hose kit you require. **3.** Select the air unit your require.

New-Tech 6-13 ADC with Internal visor	<b>0700 000 288</b>
New-Tech 9-13 ADC with Internal visor	<b>0700 000 289</b>
New-Tech 9-13 with Internal visor	<b>0700 000 290</b>
New-Tech 11 with Internal visor	<b>0700 000 291</b>

# Helmets, Masks & Screens



## New-Tech™ Helmets with Hard Hat & Fresh Air

All New-Tech welding helmets can be used in combination with a hard hat, Air 160, Air 200 and compressed air units. The helmets are delivered fully assembled, incl. hard hat with internal air duct and flame resistant head and face seal. Follow three simple steps to make up your combination:

- 1.** Select the New-Tech helmet package that you require.
- 2.** Select the hose kit you require.
- 3.** Select the air unit your require.

New-Tech 6-13 ADC prepared for Fresh air + hard hat	<b>0700 000 292</b>
New-Tech 9-13 ADC prepared for Fresh air + hard hat	<b>0700 000 293</b>
New-Tech 9-13 prepared for Fresh air + hard hat	<b>0700 000 294</b>
New-Tech 11 prepared for Fresh air + hard hat	<b>0700 000 295</b>

## Spares for New-Tech™ Combinations

Head Seal for internal visor	<b>0700 002 051</b>
Face Seal for internal visor	<b>0700 002 052</b>
Spare Visor for internal visor	<b>0700 002 053</b>
Tear off visor for internal visor	<b>0700 002 054</b>
Head Seal for hard hat	<b>0700 000 093</b>
Face Seal for hard hat	<b>0700 000 094</b>
Hard Hat with internal air duct	<b>0700 000 097</b>

## Accessories for New-Tech™



### New-Tech™ Magnifying Lenses

The New-Tech can be equipped with a magnifying lens. The magnifying lens is fitted from the inside (so no adapter is needed). There are four different diopters available, +1,0 / +1,5 / +2,0 / +2,5.

Diopter +1,0 New-Tech	<b>0700 000 084</b>
Diopter +1,5 New-Tech	<b>0700 000 085</b>
Diopter +2,0 New-Tech	<b>0700 000 086</b>
Diopter +2,5 New-Tech	<b>0700 000 087</b>



### New-Tech™ Hearing Protection

Hearing protection with neck support is available for the New-Tech. SNR rating = 26 dB.

Hearing protection with neck support	<b>0700 001 880</b>
--------------------------------------	---------------------

# Helmets, Masks & Screens

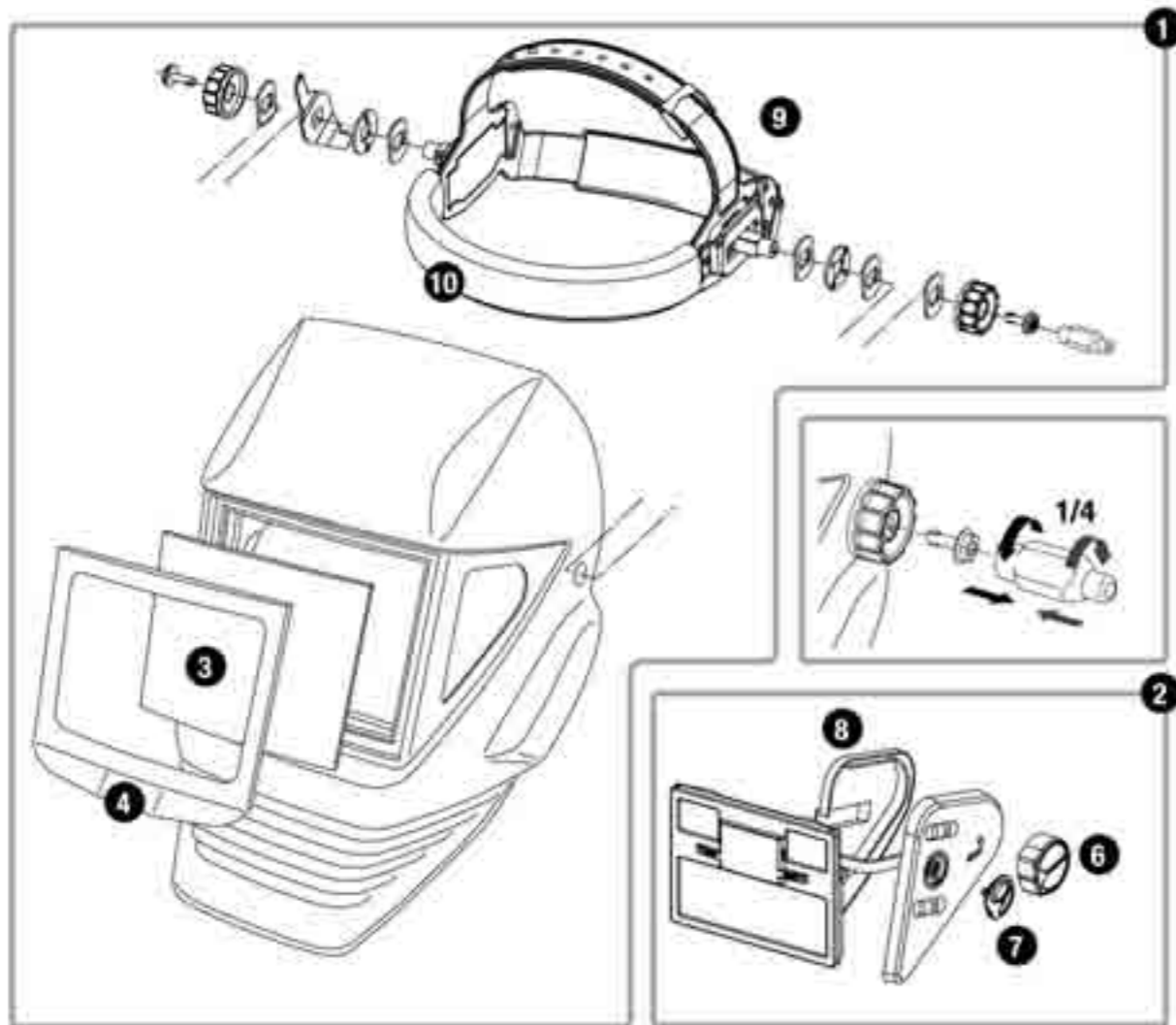


## Spares for Eye-Tech 5-13 (Fig 5)

1	Helmet shell Eye-Tech 5-13	0700 000 034
2	Cartridge 5-13	0700 000 035
3	Front cover lens	0700 000 010
4	Front cover lens holder	0700 000 006
6	Potentiometer knob	0700 000 037
7	Sensitivity knob	0700 000 038
8	Satellite cover plate	0700 000 039
9	Headgear	0700 000 003
10	Sweatband	0700 000 005
*	Inside cover lens	0700 000 011
*	Fresh air mounting kit for Eye-Tech	0700 002 030

\* Not shown

Spares for Eye-Tech 5-13 Fig 5



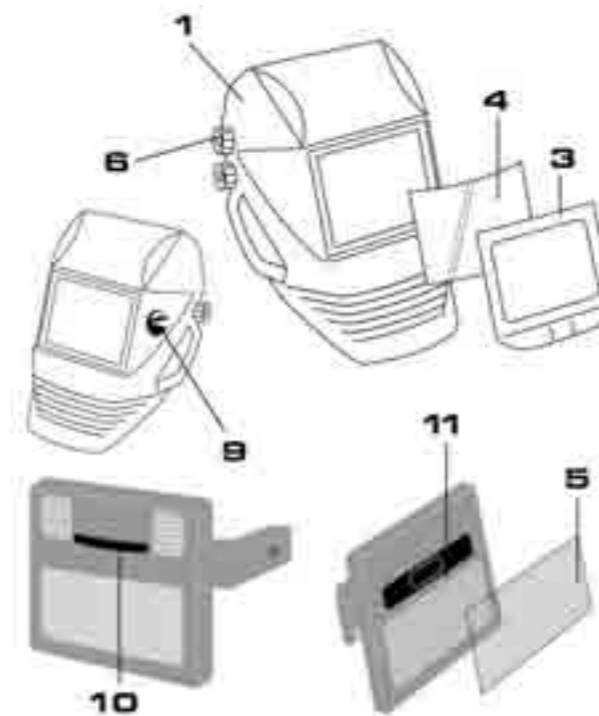
# Helmets, Masks & Screens

## Spares for Eye-Tech 9-13 (Fig 6)

1	Helmet shell Eye-Tech 9-13	0700 000 002
3	Front cover lens holder	0700 000 006
4	Front cover lens	0700 000 010
5	Inside cover lens	0700 000 011
6	Excenter knob	0700 000 009
9	Potentiometer knob	0700 000 007
10	Sensor bar	0700 000 008
11	Cartridge 9-13	0700 000 001
*	Headgear	0700 000 003
*	Sweatband	0700 000 005
*	Fresh air mounting kit for Eye-Tech	0700 002 030

\* Not shown

Spares for Eye-Tech 9-13 Fig 6

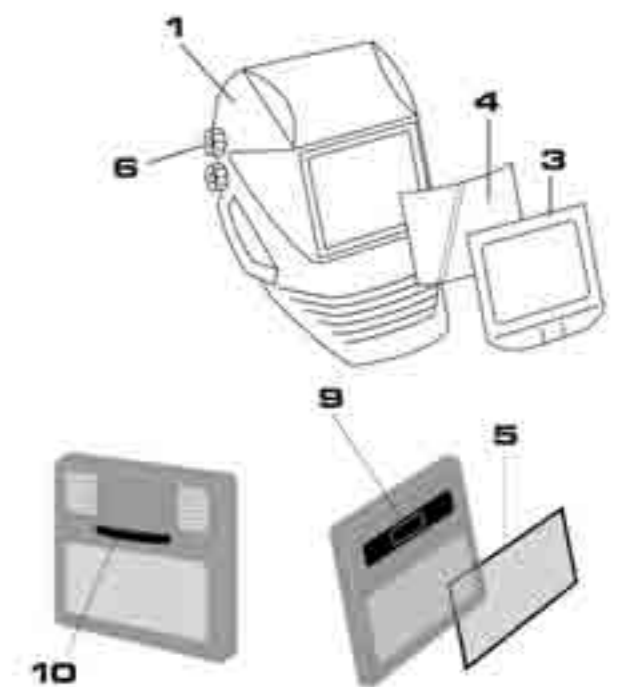


## Spares for Eye-Tech 10-12 (Fig 7)

1	Helmet shell Eye-Tech 10-12	0700 000 002
3	Front cover lens holder	0700 000 006
4	Front cover lens	0700 000 010
5	Inside cover lens	0700 000 011
6	Excenter knob	0700 000 009
9	Cartridge 10-12	0700 000 022
10	Sensor bar	0700 000 008
*	Headgear	0700 000 003
*	Sweatband	0700 000 005
*	Fresh air mounting kit for Eye-Tech	0700 002 030

\* Not shown

Spares for Eye-Tech 10-12 / 10/11 Fig 7



## Spares for Eye-Tech 10/11

1	Helmet shell Eye-Tech 10/11	0700 000 002
3	Front cover lens holder	0700 000 006
4	Front cover lens	0700 000 010
5	Inside cover lens	0700 000 011
6	Excenter knob	0700 000 009
9	Cartridge 10/11	0700 000 028
10	Sensor bar	0700 000 008
*	Headgear	0700 000 003
*	Sweatband	0700 000 005
*	Fresh air mounting kit for Eye-Tech	0700 002 030

\* Not shown



# Helmets, Masks & Screens

## Origo™-Tech 9-13

The new stylish high-tech helmet design from ESAB. The new shell is available in 2 striking high gloss colours, 'Yellow' or 'Black'. The helmet features the ESAB comfort headgear, whilst the light weight shell offers superior face, head, ear & neck protection, which allows for welding in all positions. The ESAB variable shade ADF uses the latest technology and has proven reliability. The ADF is screw retained and sits in a fully moulded light seal cradle, which also creates a slight convex curve on the front spatter lens for extra security and strength. The Helmet is delivered in an ESAB display box, fully assembled and ready to use.



### Origo™-Tech 9-13 'Black'

The Origo™-Tech 9-13 features an external shade adjustment between DIN 9 and DIN 13. The delay and sensitivity can be adjusted from the inside. The Origo™-Tech 9-13 is suitable for MIG/MAG, MMA and TIG (over 20 amps).

Origo™-Tech 'Black'

0700 000 296



### Origo™-Tech 9-13 'Yellow'

The Origo™-Tech 9-13 features an external shade adjustment between DIN 9 and DIN 13. The delay and sensitivity can be adjusted from the inside. The Origo™-Tech 9-13 is suitable for MIG/MAG, MMA and TIG (over 20 amps).

Origo™-Tech 'Yellow'

0700 000 298

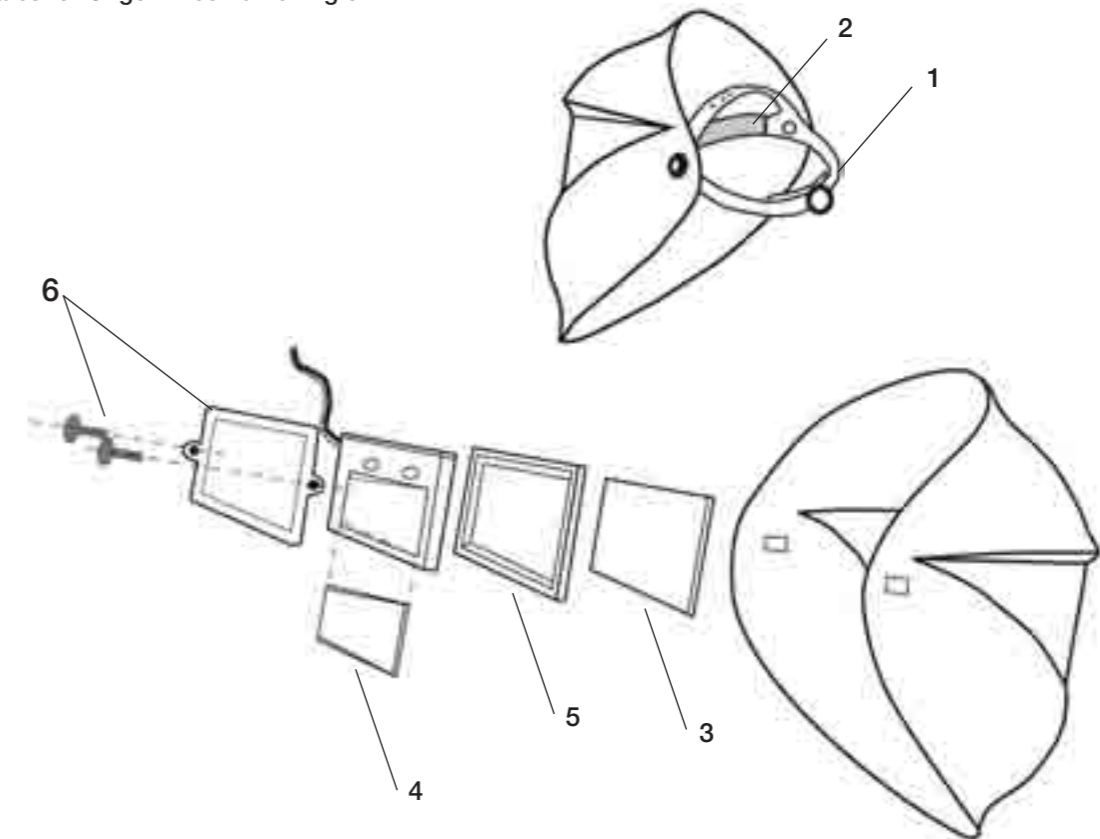
# Helmets, Masks & Screens



## Spares for Origo™-Tech 9-13 (Fig 8)

1	ESAB Head Gear Pro	0700 000 243
2	Sweat Band Head Gear Pro	0700 000 244
3	Front Cover Lens Origo™-Tech	0700 000 245
4	Inside Cover Lens Origo™-Tech	0700 000 246
5	ESAB 9-13 ADF Cradle	0700 000 235
6	Lens Retainer with Screws	0700 000 237

Spares for Origo™-Tech 9-13 Fig 8



Available from  
July 2009

### Origo™ Air

The Origo Air is a battery powered respiratory unit designed to fit the Origo-Tech welding helmets. The unit provides clean, filtered air to increase the comfort and safety for the welder. The Origo Air is delivered complete with an 8-hour battery, P3 filter, comfort pad, waist belt and an air hose with a Proban hose cover fitted. The unit is supplied with an intelligent charger, which will ensure a prolonged life time of the battery, by reducing the risk of over charging. The Origo Air is also equipped with a low flow alarm, which will give an audible signal when the filter is blocked, or the battery power is running low. The complete system is comfortable, lightweight and durable.

Origo Air Complete (EU and UK)	0700 002 100
Origo Tech 9-13 Black prepared for air	0700 000 300
Origo Tech 9-13 Yellow prepared for air	0700 000 301



# Helmets, Masks & Screens

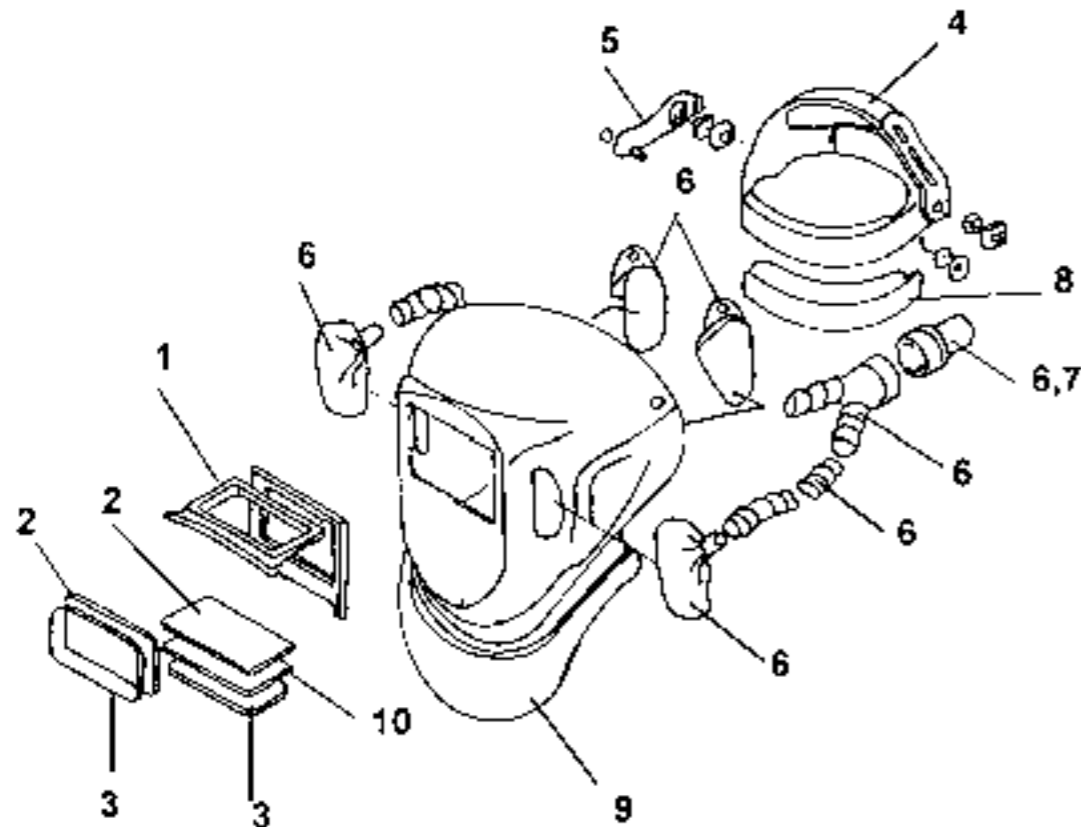


## Spares for Albatross 1000 Standard and Fresh Air (Fig 8)

1	Flip-up frame 60 x 110	0000 595 152
1	Flip-up frame 90 x 110	0349 501 084
2	Plastic cover lens 60 x 110	0160 307 001
2	Plastic cover lens 90 x 110	0160 307 004
3	Spring 60 x 110	0000 595 153
3	Spring 90 x 110	0000 595 383
4	Head gear	0000 500 519
5	Spare parts for head gear	0000 500 520
6	Air hose including adapter	0000 595 239
7	Adapter	0349 501 085
8	Air tight seal	0000 595 216
9	Face seal including bib	0000 595 178
10	Welding lens DIN 10, 60 x 110	0160 292 002
10	Welding lens DIN 10, 90 x 110	0760 031 632
*	Sweatband	0369 768 001

\* Not shown

Spares for Albatross 1000 Fig 8



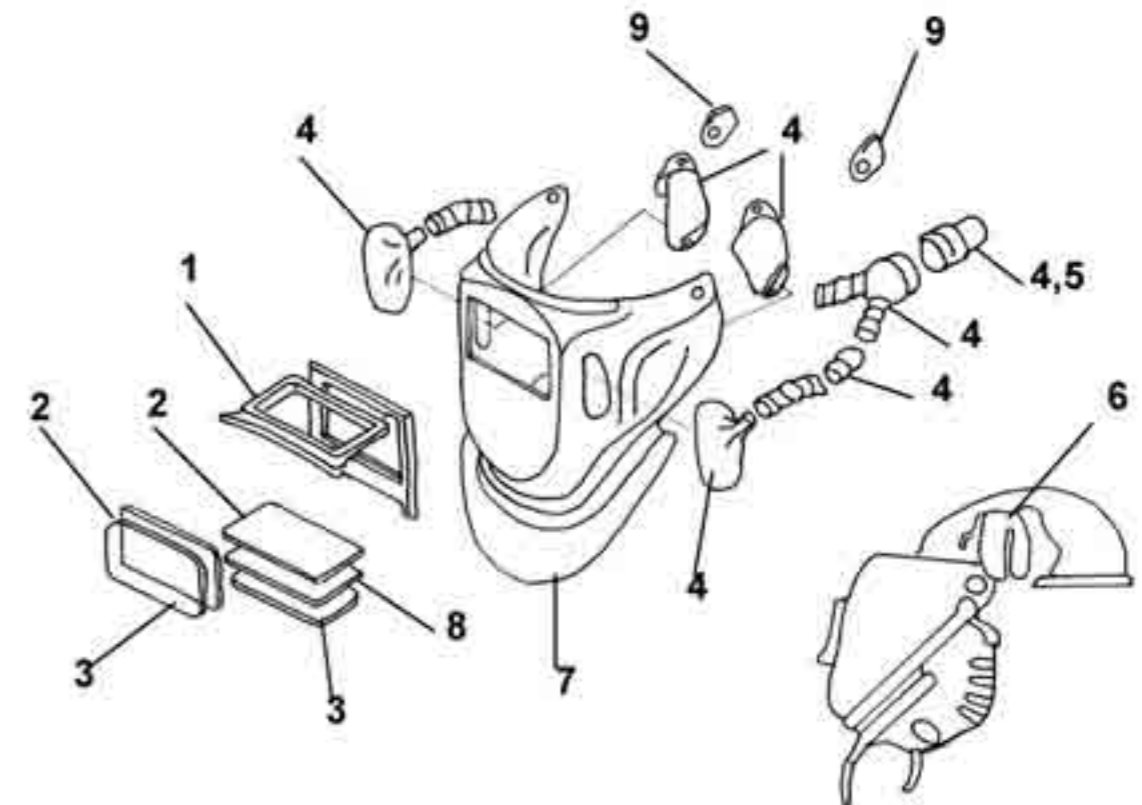
# Helmets, Masks & Screens

## Spares for Albatross 1000 for Hard Hat and Fresh Air (Fig 9)

1	Flip-up frame 60 x 110	0000 595 152
1	Flip-up frame 90 x 110	0349 501 084
2	Plastic cover lens 60 x 110	0160 307 001
2	Plastic cover lens 90 x 110	0160 307 004
3	Spring 60 x 110	0000 595 153
3	Spring 90 x 110	0000 595 383
4	Air hose including adapter	0000 595 239
5	Adapter	0349 501 085
6	Air tight seal	0000 595 216
7	Face seal including bib	0000 595 178
8	Welding lens DIN 10, 60 x 110	0160 292 002
8	Welding lens DIN 10, 90 x 110	0760 031 632
9	Helmet adapter	0368 975 883
*	Sweatband	0369 768 001

\* Not shown

Spares for Albatross 1000 Fig 9



# Helmets, Masks & Screens

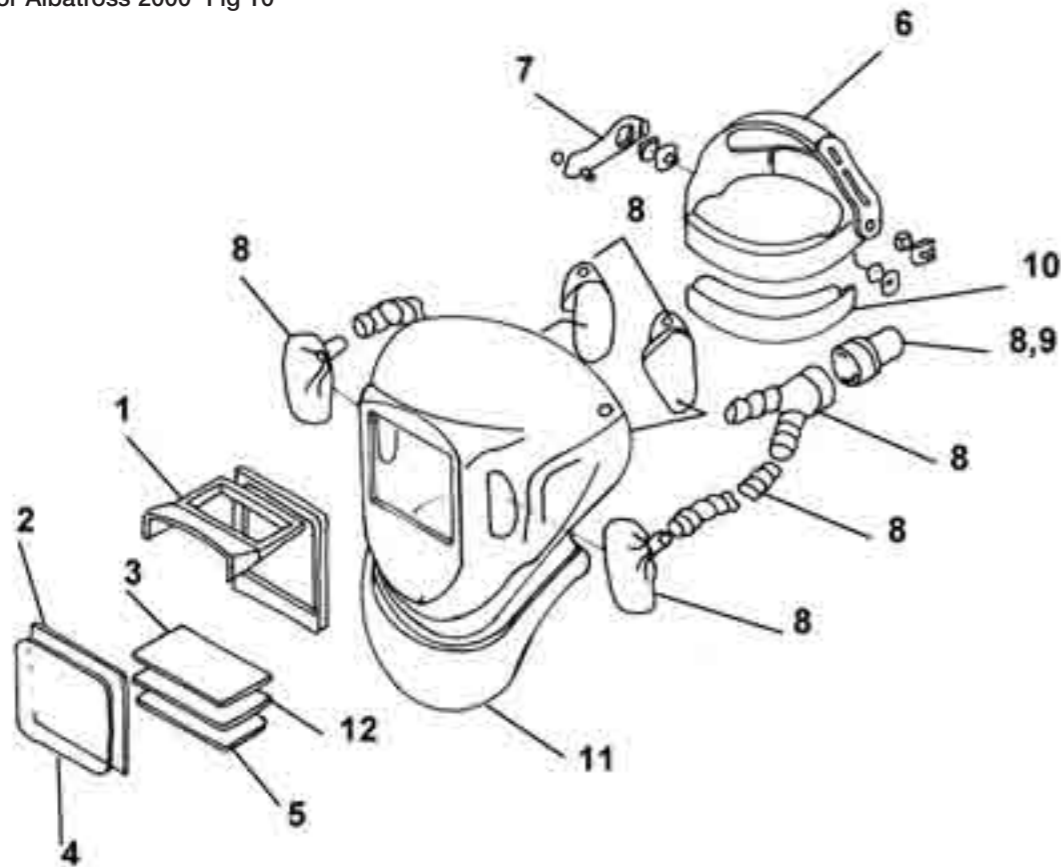


## Spares for Albatross 2000 Standard and Fresh Air (Fig 10)

1	Flip-up frame 60 x 110	0000 595 384
2	Protective lens DIN 2	0160 307 005
3	Plastic cover lens 60 x 110	0160 307 001
4	Spring 90 x 110	0000 595 383
5	Spring 60 x 110	0000 595 153
6	Head gear	0000 500 519
7	Spare parts for head gear	0000 500 520
8	Air hose including adapter	0000 595 239
9	Adapter	0349 501 085
10	Air tight seal	0000 595 216
11	Face seal including bib	0000 595 178
12	Welding lens DIN 10	0160 292 002
*	Sweatband	0369 768 001

\* Not shown

Spares for Albatross 2000 Fig 10



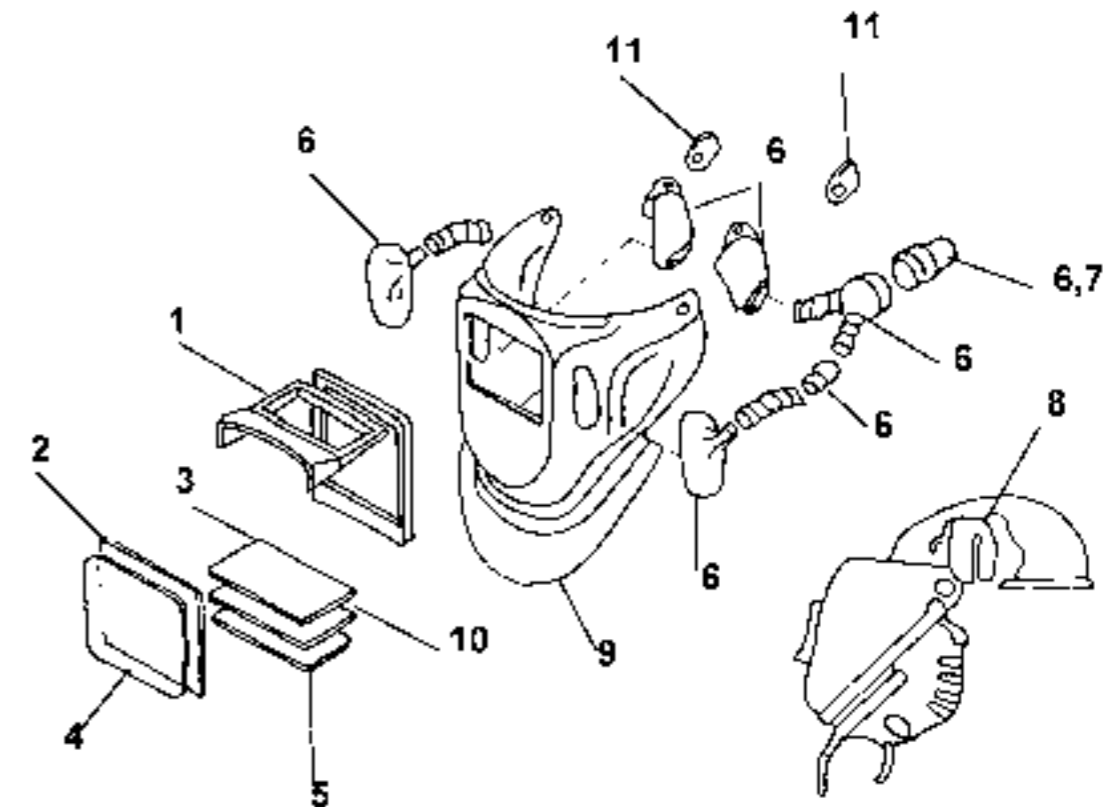
# Helmets, Masks & Screens

## Spares for Albatross 2000 for Hard Hat and Fresh Air (Fig 11)

1	Flip-up frame 60 x 110	0000 595 384
2	Protective lens DIN 2	0160 307 005
3	Plastic cover lens 60 x 110	0160 307 001
4	Spring 90 x 110	0000 595 383
5	Spring 60 x 110	0000 595 153
6	Air hose including adapter	0000 595 239
7	Adapter	0349 501 085
8	Air tight seal	0000 595 216
9	Face seal including bib	0000 595 178
10	Welding lens DIN 10	0160 292 002
11	Helmet adapter	0368 975 883
*	Sweatband	0369 768 001

\* Not shown

Spares for Albatross 2000 Fig 11





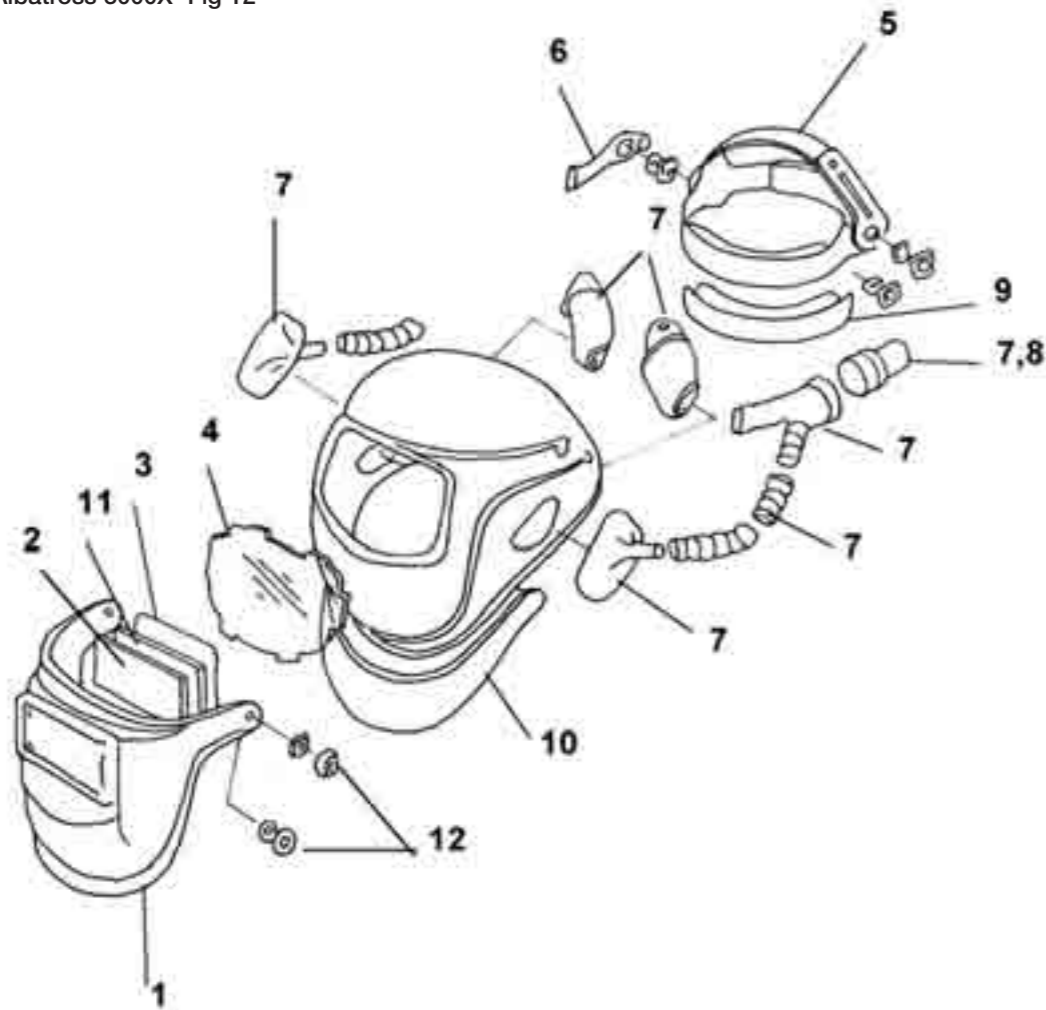
# Helmets, Masks & Screens



## Spares for Albatross 3000X Standard and Fresh Air (Fig 12)

1	Visor 90 x 110	0700 000 101
2	Plastic Cover Lens 90 x 110	0160 307 004
3	Spring 90 x 110	0000 595 383
4	Big Lens Albatross 3000X	0700 000 102
5	Head Gear	0000 500 519
6	Spare parts for Head gear	0000 500 520
7	Air Hose Including Adapter	0000 595 239
8	Adapter	0349 501 085
9	Air Tight Seal	0000 595 216
10	Face Seal including Bib	0000 595 178
11	Welding Lens DIN 10	0760 031 632
12	Hinge set for Visor	0700 000 048

Spares for Albatross 3000X Fig 12

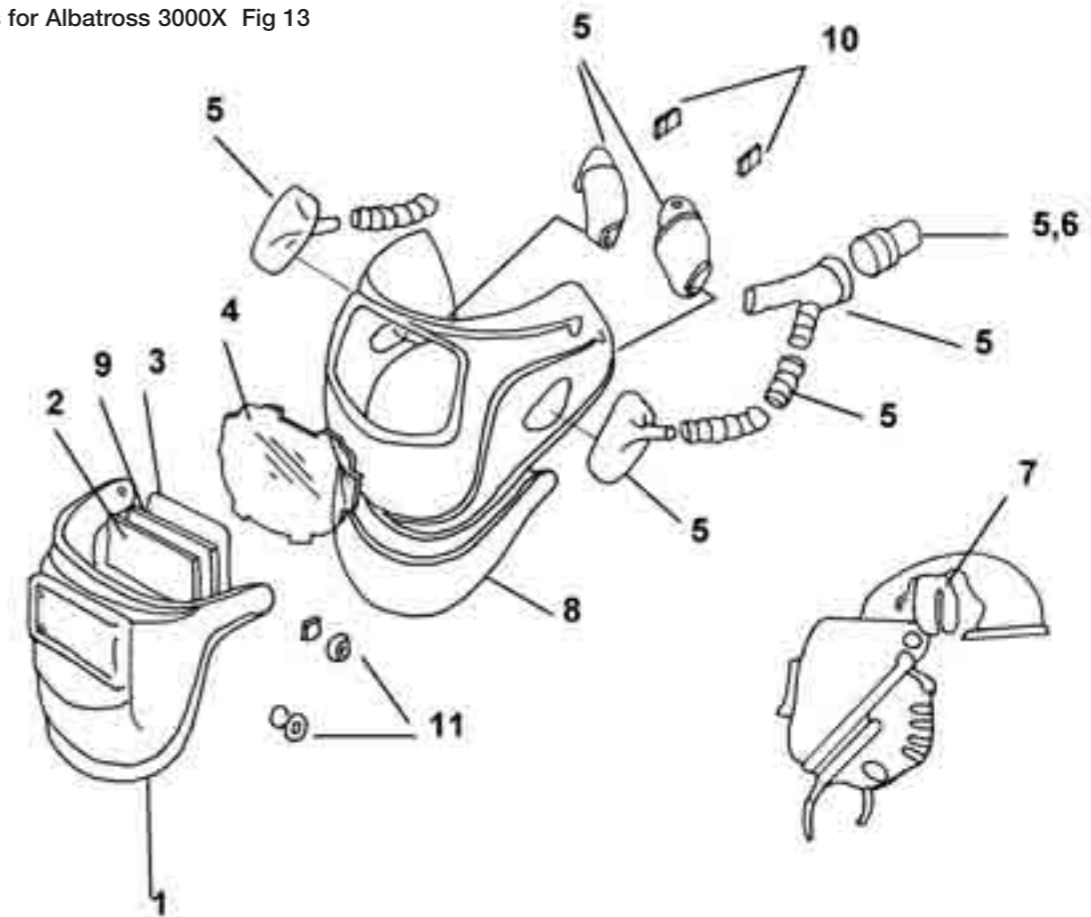


# Helmets, Masks & Screens

## Spares for Albatross 3000X for Hard Hat and Fresh Air (Fig 13)

1	Visor 90 x 110	0700 000 101
2	Plastic Cover Lens 90 x 110	0160 307 004
3	Spring 90 x 110	0000 595 383
4	Big Lens Albatross 3000X	0700 000 102
5	Air Hose including adapter	0000 595 239
6	Adapter	0349 501 085
7	Air Tight Seal	0000 595 216
8	Face Seal including Bib	0000 595 178
9	Welding Lens DIN 10	0760 031 632
10	Helmet adapter	0368 975 883
11	Hinge set for Visor	0700 000 048

Spares for Albatross 3000X Fig 13



# Helmets, Masks & Screens

## Globe-Arc

The Globe-Arc helmet has been designed to provide the ideal protection for all kinds of metal working. The inner lens in combination with the outer lens provide full protection against IR, UV and visible light making it suitable for welding. The inner lenses are available in a number of different shades; DIN 2, DIN 3 and DIN 5. The helmet can therefore also be used for grinding, gas cutting, gas welding and plasma cutting.



# Helmets, Masks & Screens



## Globe-Arc



The Globe-Arc is a unique design in flip front welding and grinding helmets. The visor provides effective protection from UV and IR radiation when the visor is both open and closed, and is available in different shade levels. The helmet is equipped with a strong and comfortable head gear.

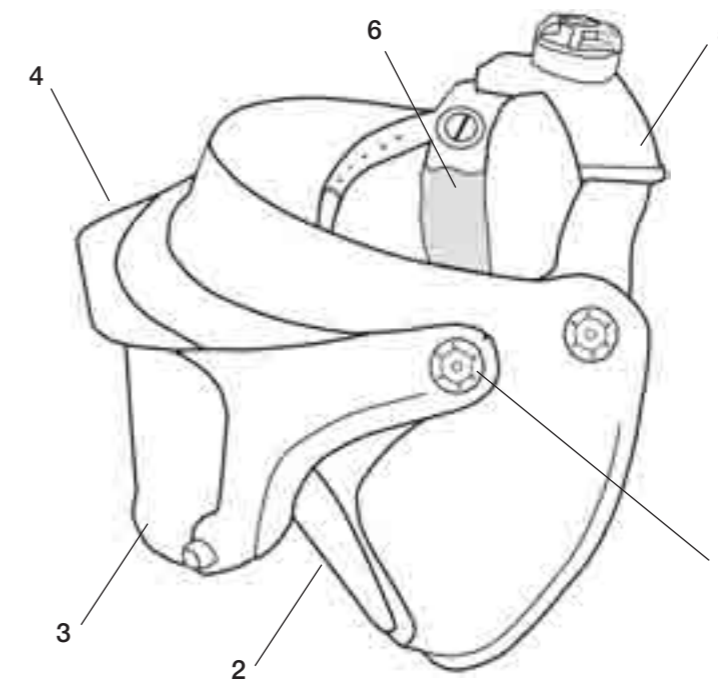
Globe-Arc Shade 10	0700 000 947
Globe-Arc Shade 11	0700 000 943

Available from  
May 2009

## Spares for Globe-Arc (Fig 14)

1 Hinge Set	0700 000 267
2 Large Inner Visor Globe-Arc DIN 2	0700 000 239
2 Large Inner Visor Globe-Arc DIN 3	0700 000 240
2 Large Inner Visor Globe-Arc DIN 5	0700 000 241
3 Outer Flip Visor Globe-Arc DIN 5	0700 000 242
3 Outer Flip Visor Globe-Arc DIN 8	0700 000 247
3 Outer Flip Visor Globe-Arc DIN 10	0700 000 248
4 Flip Up Globe-Arc Holder	0700 000 249
5 Headgear Globe-Arc	0700 000 243
6 Sweat Band	0700 000 244

Spares for Globe-Arc Fig 14





# Helmets, Masks & Screens

## Eco-Arc Welding Helmets

The new Eco-Arc is the latest design in flip front passive welding helmets. With a light weight Poly Propylene shell, and outstanding facial protection, the helmet is suitable for all position welding. Available in six different sized flip front options, the helmet also adopts the new Eco Headgear, with 4 rake positions and 3 longitudinal adjustment positions for precise nose to shell adjustment. The helmet is supplied complete with outer protection lens, shade 11 mineral glass and the unique large internal protection glass.



# Helmets, Masks & Screens



## Eco-Arc Helmets



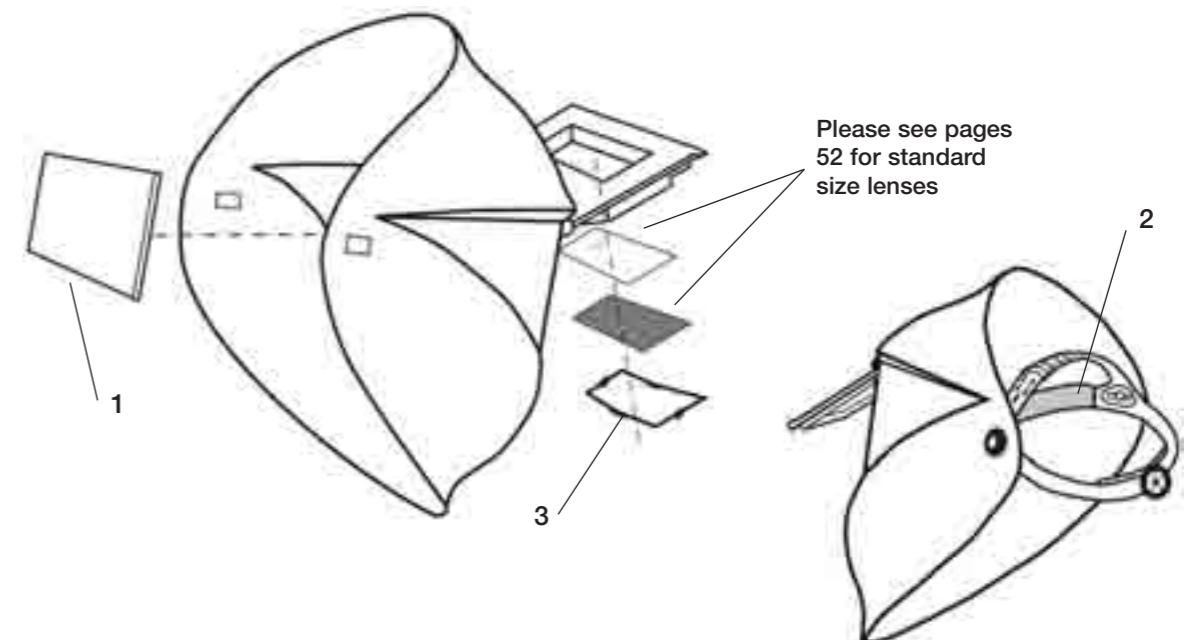
Eco-Arc 60 x 110 un-assembled - 20 pcs*	0700 000 938
Eco-Arc 60 x 110 individually packed	0700 000 950
Eco-Arc 90 x 110 un-assembled - 20 pcs*	0700 000 939
Eco-Arc 51 x 108 un-assembled - 20 pcs*	0700 000 940
Eco-Arc 83 x 108 un-assembled - 20 pcs *	0700 000 941
Eco-Arc 98 x 75 un-assembled - 20 pcs*	0700 000 942
Eco-Arc 55 x 110 un-assembled - 20 pcs*	0700 000 949

\* This helmet is delivered with the headgear unattached.

## Spares for Eco-Arc Helmets (Fig 15)

1 Inside Cover Lens Eco-Arc	0700 000 252
2 Sweat Band	0700 000 244
3 Lens Retaining Clip 60 x 110	0700 000 255
3 Lens Retaining Clip 90 x 110	0700 000 256
3 Lens Retaining Clip 98 x 75	0700 000 257
3 Lens Retaining Clip 83 x 108	0700 000 258
3 Lens Retaining Clip 55 x 110	0700 000 259
3 Lens Retaining Clip 51 x 108	0700 000 260

Spares for Eco-Arc Helmets Fig 15



# Helmets, Masks & Screens



## Leather Mask

This leather mask can be used when there is not enough space for welding with a conventional welding helmet. Glass size 90 x 110mm.

Leather mask	<b>0000 593 221</b>
--------------	---------------------



## SF11 Helmet Short Shell

A traditional short shell helmet made from high performance glass fibre. Weight 600g. Lens aperture 108 x 83mm (4 1/4" x 3 1/4").

SF11	<b>0700 654 889</b>
Rubber glass holder Pk 5	<b>0701 380 163</b>
Helmet head band foam Pk 10	<b>0701 380 214</b>
Lens retaining nut Pk 5	<b>0701 386 154</b>
Helmet head band foam Pk 10 (white)	<b>0701 415 838</b>



## SF8 Lightweight Helmet

A lightweight thermoplastic helmet weighing 420g. Lens aperture 108 x 83mm (4 1/4" x 3 1/4").

SF8	<b>0701 380 430</b>
Rubber glass holder Pk 5	<b>0701 380 163</b>
Helmet head band foam Pk 10	<b>0701 380 214</b>
Lens retaining nut Pk 5	<b>0701 386 154</b>
Helmet head band foam Pk 10 (white)	<b>0701 415 838</b>



## Hand Screen E

A safe welding screen with replaceable welding glass, 60 x 110mm.

Hand screen E	<b>0332 109 880</b>
---------------	---------------------



# Helmets, Masks & Screens



## Hand Screen H

A safe welding screen that also protects the hand. Replaceable welding glass, size 60 x 110mm. Weight 330g.

Hand screen H with clear and coloured glass **0160 294 880**



## Hand Screen Delta

Welding screen that protects the face as well as the hand. The window size is 90 x 110mm. Welding glass not included.

Hand screen Delta **0700 000 900**



## Hand Screen SF12

Deep shell fibre glass screen. Weighs 525g. Lens aperture 108 x 83mm (4 1/4" x 3 1/4").

Hand screen SF12 **0700 654 890**



## Hand screen SF2

Flat fronted fibreglass hand screen. Weight 450g. Lens aperture 108 x 83mm (4 1/4" x 3 1/4").

Hand screen SF2 **0700 655 002**

# Filter & Spatter Lenses



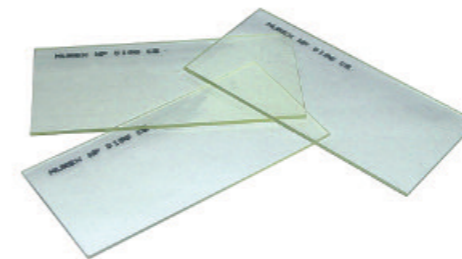
## Filter Lenses

Traditional glass filter lenses of excellent UV- and IR protection and thermal stability. Solid glass lenses are not robust and must be used with a polycarbonate backing lens and a glass- or plastic cover lens.

Filter Lens 98 x 75 shade 9 Pk 25	<b>0000 915 059</b>	Filter Lens 51 x 108 shade 9 Pk 25	<b>0760 031 601</b>
Filter Lens 98 x 75 shade 10 Pk 25	<b>0000 904 305</b>	Filter Lens 51 x 108 shade 10 Pk 25	<b>0760 031 602</b>
Filter Lens 98 x 75 shade 11 Pk 25	<b>0000 915 060</b>	Filter Lens 51 x 108 shade 11 Pk 25	<b>0760 031 603</b>
Filter Lens 98 x 75 shade 12 Pk 25	<b>0000 915 061</b>	Filter Lens 51 x 108 shade 12 Pk 25	<b>0760 031 604</b>
Filter Lens 98 x 75 shade 13 Pk 25	<b>0000 915 062</b>	Filter Lens 51 x 108 shade 13 Pk 25	<b>0760 031 605</b>
Filter Lens 60 x 110 shade 8 Pk 25	<b>0160 292 000</b>	Filter Lens 50mm Diameter shade 4	<b>0000 665 604</b>
Filter Lens 60 x 110 shade 9 Pk 25	<b>0160 292 001</b>	Filter Lens 50mm Diameter shade 5	<b>0000 665 605</b>
Filter Lens 60 x 110 shade 10 Pk 25	<b>0160 292 002</b>	Filter Lens 50mm Diameter shade 6	<b>0000 665 606</b>
Filter Lens 60 x 110 shade 11 Pk 25	<b>0160 292 003</b>	Filter Lens 8EW 108 x 83	
Filter Lens 60 x 110 shade 12 Pk 25	<b>0160 292 004</b>	(4 1/4" x 3 1/4") Pk 10	<b>0701 416 367</b>
Filter Lens 60 x 110 shade 13 Pk 25	<b>0160 292 005</b>	Filter Lens 9EW 108 x 83	
Filter Lens 90 x 110 shade 9 Pk 25	<b>0760 031 631</b>	(4 1/4" x 3 1/4") Pk 10	<b>0701 416 369</b>
Filter Lens 90 x 110 shade 10 Pk 25	<b>0760 031 632</b>	Filter Lens 10EW 108 x 83	
Filter Lens 90 x 110 shade 11 Pk 25	<b>0760 031 633</b>	(4 1/4" x 3 1/4") Pk 10	<b>0701 416 371</b>
Filter Lens 90 x 110 shade 12 Pk 25	<b>0760 031 634</b>	Filter Lens 11EW 108 x 83	
Filter Lens 90 x 110 shade 13 Pk 25	<b>0760 031 635</b>	(4 1/4" x 3 1/4") Pk 10	<b>0701 416 373</b>
Filter Lens 50 x 105 shade 9 Pk 25	<b>0590 028 216</b>	Filter Lens 12EW 108 x 83	
Filter Lens 50 x 105 shade 10 Pk 25	<b>0590 028 217</b>	(4 1/4" x 3 1/4") Pk 10	<b>0701 416 375</b>
Filter Lens 50 x 105 shade 11 Pk 25	<b>0590 028 218</b>	Filter Lens 13EW 108 x 83	
Filter Lens 50 x 105 shade 12 Pk 25	<b>0590 028 219</b>	(4 1/4" x 3 1/4") Pk 10	<b>0701 416 376</b>
Filter Lens 50 x 105 shade 13 Pk 25	<b>0590 028 220</b>		

## Cover Lenses

A suitable cover lens must be used to protect the filter lens from spatter and damage.



Cover Lens 60 x 110 glass Pk 25	<b>0291 102 701</b>
Cover Lens 60 x 110 plastic Pk 100	<b>0160 307 001</b>
Cover Lens 90 x 110 glass Pk100	<b>0760 031 040</b>
Cover Lens 90 x 110 plastic Pk 100	<b>0160 307 004</b>
Cover Lens 51 x 108 glass Pk 25	<b>0760 031 010</b>
Cover Lens 51 x 108 plastic Pk 100	<b>0160 307 002</b>
Cover Lens 50 x 105 glass Pk 100	<b>0590 028 221</b>
Cover Lens 50x105 plastic Pk 100	<b>0590 028 222</b>
Cover Lens 98 x 75 glass Pk 100	<b>0000 915 058</b>
Cover Lens 98 x 75 plastic Pk 100	<b>0000 915 097</b>
Cover Lens 108 x 83 (4 1/4 x 3 1/4) glass Pk 10	<b>0701 416 341</b>
Cover Lens 108 x 83 (4 1/4 x 3 1/4) plastic Pk 10	<b>0701 416 332</b>
Cover Lens Diameter 50mm glass Pk 50	<b>0000 665 600</b>
Cover Lens Diameter 50mm plastic Pk 50	<b>0000 665 618</b>

## CR 39 Cover lenses

Cover Lens CR39 108 x 51 (4 1/4 x 2) Pk10	<b>0701 416 348</b>
Cover Lens CR39 108 x 51 (4 1/4 x 2) Pk100	<b>0701 416 349</b>
Cover Lens CR39 108 x 83 (4 1/4 x 3 1/4) Pk10	<b>0701 416 350</b>
Cover Lens CR39 108 x 83 (4 1/4 x 3 1/4) Pk100	<b>0701 416 351</b>
Cover Lens CR39 60 x 110 Pk10	<b>0701 416 352</b>
Cover Lens CR39 90 x 110 Pk10	<b>0701 416 354</b>

# Hard Hats & Hearing Protection



## Hard Hat for New-Tech and Eye-Tech

The hard hat for New-Tech and Eye-Tech provides the user with the lightest, strongest and most comfortable helmet available. The helmet is manufactured from ABS material and weighs only ~300g. The head gear is equipped with a ratchet adjustment for easy adjustment and comfort. Approved to EN 397.

Hard hat Concept Yellow	0700 000 052
Hard hat Concept White	0700 000 135
Hard hat Concept Blue	0700 000 136
Hard hat Concept Green	0700 000 137
Hard hat Concept Red	0700 000 138



## Hard Hat G2000 and G22

The G2000 hard hat is designed to fit the Albatross series of welding helmets whilst the G22 will fit together with the Euromaski welding helmet.

Hard hat G2000	0468 051 881
Hard hat G22	0468 051 880



## Hearing Protection

ESAB's hearing protectors are available in three different versions; One that can be attached to a protective helmet, one with neck support, one with head support. All of these provide effective protection at different decibel levels.

Hearing protector with neck support	0700 001 880
Hearing protector with head support, SNR 26 dB	0000 595 199
Hearing protector for G22c, yellow SNR 26 dB	0367 420 002
Hearing protector for G2000c, yellow SNR 26 dB	0367 420 003
Economy ear defender SNR 21 dB	0701 380 477



## Bump Cap

The baseball bump cap provides lightweight head protection where high impact resistance is not essential, but where there is a risk of minor bumps or scrapes to the head. A high level of comfort is provided by the liner and cap design and the large side mesh panels allow for the maximum ventilation allowed within EN 812.

Bump cap	0700 000 925
----------	--------------

# Respiratory Equipment



## ESAB Air

ESAB always recommend the use of a full respiratory system for maximum protection against welding fume. For the ultimate protection and for use in the most aggressive of welding environments, ESAB offer the Air 200, Air 160 and Origo™ Air.



## ESAB Air 200

The Air 200 powered respiratory system is approved to EN 12941:1998. The power unit is equipped with a flashing visible and audio low flow alarm that indicates when the battery is running low or when the filter is blocked. The unit provides 200 litres of clean/filtered air per minute to provide a comfortable working environment. The unit is equipped with an improved battery pack utilising a small case. The overall weight of the complete unit has been reduced whilst the battery capacity is still kept at 8 h. The intelligent charger will ensure a prolonged lifetime of the battery by reducing the risk of over charging.

Air 200 Complete (EU and UK)	0700 002 999
------------------------------	--------------



## ESAB Air 160

The Air 160 powered respiratory systems have been upgraded to increase the levels of comfort and safety for the welder. It provides 160 litres of clean/filtered air per minute to give a more pleasant working environment. The unit only weighs 1kg but will still withstand the toughest of environments. The unit is supplied with a P3 filter with an extraordinary filtration capacity. The battery, which have an operating capacity of 8 hours, can be charged separate from the motor unit, hence it can be utilised when working double shifts. The Air 160 can be used together with the Eye-Tech, Eye-Tech II, New-Tech, Euromask, Albatross, Spraying/grinding & Grinding Visor.

ESAB Air 160-8H Complete (EU)	0700 002 926
ESAB Air 160-8H Complete (UK)	0700 002 954

Available from  
July 2009



## Origo™ Air

The Origo Air is a battery powered respiratory unit is designed to fit the Origo-Tech welding helmets. The unit provides clean/filtered air to increase the comfort and safety for the welder. The Origo Air is delivered complete with an 8-hour battery, P3 filter, comfort pad, waist belt and an air hose with a Proban hose cover fitted. This unit is supplied with an intelligent charger, which ensures a prolonged life time of the battery, by reducing the risk of over charging. The Origo Air is equipped with a low flow alarm, which will give an audible signal when the filter is blocked or the battery power is running low. The complete system is comfortable, lightweight and durable.

Origo Air Complete (EU and UK) including Air Hose	0700 002 100
---	--------------



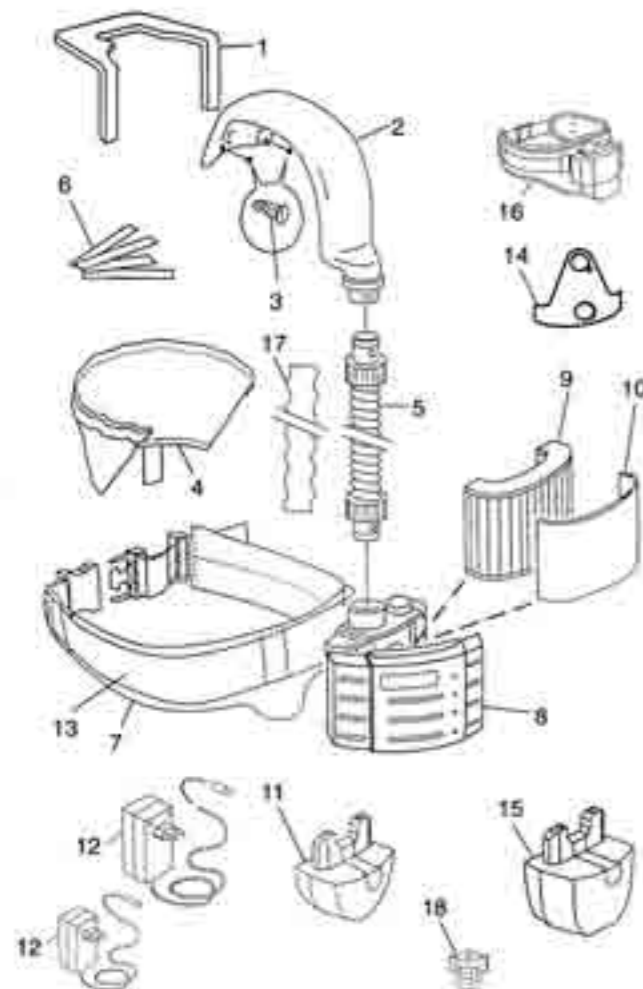
# Respiratory Equipment



## Spares for Air 160/200 (Fig 16)

1 Head seal Eye-Tech	<b>0700 002 012</b>	9 P2 filter carbon	<b>0700 002 041</b>
1 Head seal New-Tech / Eye-Tech II	<b>0700 002 048</b>	10 Pre filter Pk 5	<b>0700 002 023</b>
2 Air channel Eye-Tech	<b>0700 002 002</b>	10 Carbon Pre filter Pk 10	<b>0700 002 040</b>
2 Air channel New-Tech / Eye-Tech II	<b>0700 002 050</b>	11 Battery small Air 160	<b>0700 002 013</b>
3 Screws for air channel	<b>0700 002 028</b>	11 Battery small Air 200	<b>0700 002 080</b>
4 Face seal Eye-Tech	<b>0700 002 019</b>	12 Battery charger small 2 Pin (EU)	<b>0700 002 020</b>
4 Face seal New-Tech / Eye-Tech II	<b>0700 002 049</b>	12 Battery charger small 3 Pin (UK)	<b>0700 002 044</b>
5 Air hose New-Tech / Eye-Tech / Eye-Tech II	<b>0468 127 011</b>	12 Battery charger large 2 Pin (EU)	<b>0700 002 031</b>
5 Air hose New-Tech / Eye-Tech / Eye-Tech II 1m	<b>0700 002 055</b>	12 Battery charger large 3 Pin (UK)	<b>0700 002 045</b>
5 Air hose New-Tech / Eye-Tech / Eye-Tech II - Heavy Duty	<b>0700 002 081</b>	12 Intelligent charger	<b>0701 416 203</b>
5 Air hose Albatross	<b>0700 002 032</b>	12 Five way intelligent charger	<b>0701 416 136</b>
6 Velcro set (Eye-Tech only)	<b>0700 002 015</b>	13 Waist belt	<b>0700 002 027</b>
7 Comfort pad standard	<b>0700 002 021</b>	14 Holder for air channel	<b>0700 002 029</b>
7 Comfort pad large	<b>0700 002 022</b>	15 Battery large Air 160	<b>0700 002 014</b>
8 Air 160 motor unit	<b>0700 002 042</b>	15 Battery large Air 200	<b>0700 002 082</b>
8 Air 200 motor unit	<b>0700 002 079</b>	16 Air 160 complete (EU)	<b>0700 002 926</b>
9 P3 filter	<b>0700 002 024</b>	16 Air 160 complete (UK)	<b>0700 002 954</b>
9 P2 filter	<b>0700 002 018</b>	16 Air 200 complete EU & UK	<b>0700 002 999</b>
		17 Proban hose cover	<b>0349 501 071</b>
		18 Air flow indicator	<b>0468 127 004</b>
		Back plate (not shown)	<b>0701 502 396</b>

Spares for Air 160/200 Fig 16



### COMPATIBLE MOUNTING KIT

ESAB offers a compatible mounting kit for the Eye-Tech, Eye-Tech II & New-Tech. This allows the helmet to be adapted to either the Air 160 or Air 200 respiratory unit.

Mounting kit Eye-Tech **0700 002 030**  
(Face seal, Velcro, head seal, air channel)

Mounting kit Eye-Tech II & New-Tech **0700 002 047**  
(Face seal, velcro, head seal, air channel)

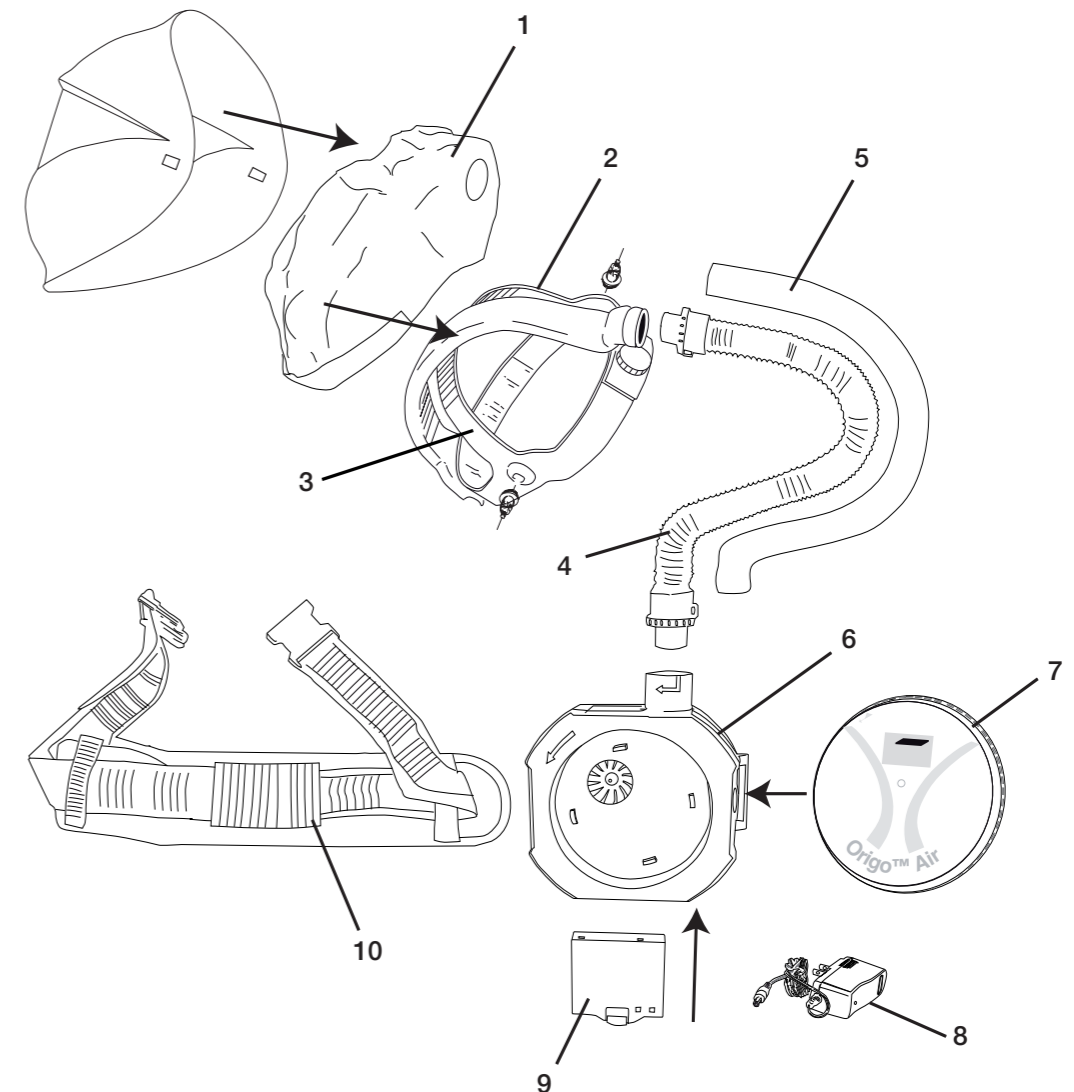
# Respiratory Equipment

## Spares for Origo Air (Fig 17)

1 Face Seal	<b>0700 002 101</b>
2 Air Duct	<b>0700 002 102</b>
3 Head Gear	<b>0700 000 243</b>
4 Air Hose	<b>0700 002 103</b>
5 Proban Hose Cover	<b>0700 002 104</b>
6 Motor Unit	<b>0700 002 105</b>
7 Filter	<b>0700 002 106</b>
8 Charger Adapter	<b>0700 002 107</b>
9 Battery	<b>0700 002 108</b>
10 Waist Belt	<b>0700 002 109</b>



Spares for Origo Air Fig 17



# Spectacles, Goggles & Visors

## ESAB Pro Safety Spectacles

These stylish spectacles are used for drilling, chipping and metalworking. They have a sporty style, soft to the touch, and have a lightweight wrap around, including a neck cord. They are extremely flexible and durable, and are available in four different lens configurations. All lens configurations provide protection against dangerous UV radiation. CE approved according to EN 166-F. There are 10 pairs packed per box.



### ESAB Pro Clear

The clear lens is suitable when working indoors, providing general eye protection.

ESAB Pro Clear **0700 012 013**



### ESAB Pro Smoked

The smoked lens is suitable when working in strong ambient light.

ESAB Pro Smoked **0700 012 014**



### ESAB Pro Amber

The Amber (yellow lens) enhances the light. This is suitable when the ambient light is not sufficient.

ESAB Pro Amber **0700 012 015**



### ESAB Pro Shade 5

The shade 5 spectacle provide protection not only against IR/UV light but also against the visible light during gas welding/cutting.

ESAB Pro Shade 5 **0700 012 016**

# Spectacles, Goggles & Visors



## ESAB Eco Safety Spectacles

These stylish spectacles are used for drilling, chipping and metalworking, they have a sporty style and are extremely lightweight. Available in three different lens configurations. All lens configurations provide protection against dangerous UV radiation. CE approved according to EN 166-F. There are 10 pairs packed per box.



### ESAB Eco Clear

The clear lens is suitable when working indoors, providing general eye protection.

ESAB Eco Clear **0700 012 017**



### ESAB Eco Smoked

The smoked lens is suitable when working in strong ambient light.

ESAB Eco Smoked **0700 012 018**



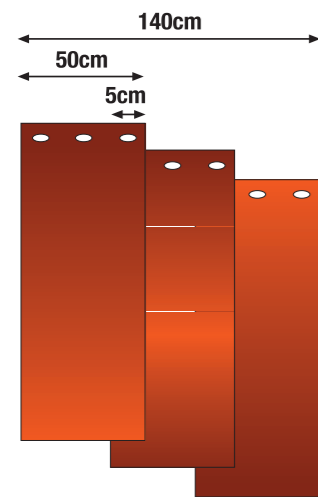
### ESAB Eco Amber

The Amber (yellow lens) enhances the light. This is suitable when the ambient light is not sufficient.

ESAB Eco Amber **0700 012 019**



# Welding Curtains



## Welding Curtains

Three colour types are available and all three can be supplied as standard curtains, as well as strip curtains. The self-extinguishing material provides good protection from dangerous welding radiation. The curtains are equipped with press-studs for easy, strong fastening and they are folded at the top and the bottom to withstand harsh use. The strip curtain allows access and enables material to be passed through, even when it is closed. All approved according to prEN 1598. The mounting rings come in a package of seven, which is enough to mount any of the curtains (standard as well as strip). Rings are included when ordering any of the curtains.

Welding curtain, dark red, 1.8 x 1.4m	<b>0700 008 004</b>
Welding curtain, green transparent, 1.8 x 1.4m	<b>0700 008 005</b>
Welding curtain, dark green (DIN 9), 1.8 x 1.4m	<b>0700 008 006</b>
Welding strip curtain, dark red, 1.8 x 1.4m	<b>0700 008 001</b>
Welding strip curtain, green transparent (DIN 6), 1.8 x 1.4m	<b>0700 008 002</b>
Welding strip curtain, dark green (DIN 9), 1.8 x 1.4m	<b>0700 008 003</b>
Mobile curtain, without wheel, dark red, 2 x 1.4m	<b>0000 595 313</b>
Mobile curtain, without wheel, dark red, 2 x 2m	<b>0000 595 315</b>
Mounting rings PVC	<b>0700 008 007</b>
Mounting rings metal	<b>0700 008 008</b>

## Wire Reel for Welding Curtains

The wire reel is used when hanging the curtains. The wire is an 8 metre retractable stainless steel line. The unit is fixed to the wall and the line is tightened by using the specially designed torque control.

Wire reel for welding curtain	<b>0700 008 018</b>
-------------------------------	---------------------

# Welding Curtains



## ESAB VersiFlex Frame for Welding Curtains

The new frame is made from jointed 32 and 22mm diameter steel tubing, with the joints to the leg portions being precision swaged for a sturdier joint. The ultra stable frame with a 700mm pitch for the feet width comes with rubber feet as standard. The offset legs enable two frames to be put together to make a tight 90 corner, or 4 frames together to make a cubicle.

### As standard the Versi Flex frame can make 3 width sizes:

- 1) 1000 as a frame to make a cutting barrier with a Welding Blanket.
- 2) 1400 as the standard welding curtain frame.
- 3) 2000 as wider version of the above.

### Options for the frame:

- 1) A set of 4 wheels, these simply screw into the sockets covered by the standard rubber feet, turning the screen into a mobile.
- 2) A set of 2 outriggers, these handy outriggers extend the frame from 2000 to 4000 wide, but can also be used to make sides to a standard frame as a partial cubicle.

ESAB VersiFlex frame system	<b>0700 008 020</b>
Set of outrigger arms (Set of 2)	<b>0700 008 021</b>
Set of wheels (Set of 4)	<b>0700 008 022</b>





# ***Welding Tools and Accessories***

A range of quality tools and accessories for welding, cutting and general engineering applications offering everything from cable connectors to high specification electrode drying ovens. All our welding tools and accessories conform to the relevant EU legislation and standards.



# Cables & Connectors



## Welding Cable, <HAR> H01N2-D

ESAB welding cable is of the highest quality and has top-class performance characteristics. This cable is approved in accordance with international standards and it is harmonised <HAR>. The cable is extremely resistant to light, chemicals and mechanical damage and it maintains its flexibility even when used in a cool environment.

Sectional area 16mm <sup>2</sup> sold per 50m coils	<b>0190 429 801</b>
Sectional area 25mm <sup>2</sup> sold per 50m coils	<b>0262 613 601</b>
Sectional area 35mm <sup>2</sup> sold per 50m coils	<b>0262 613 602</b>
Sectional area 50mm <sup>2</sup> sold per 50m coils	<b>0262 613 606</b>
Sectional area 70mm <sup>2</sup> sold per 50m coils	<b>0262 613 603</b>
Sectional area 95mm <sup>2</sup> sold per 50m coils	<b>0262 613 604</b>
Sectional area 120mm <sup>2</sup> sold per 25m coils	<b>0262 613 605</b>
<hr/>	
50mm Hammer Lug Pk 3	<b>0701 380 049</b>
95mm Hammer Lug Pk 3	<b>0701 380 050</b>

## OKC Cable Connection



A new generation of CE-approved, fully insulated cable connections with neoprene rubber. Bayonet-type connection which locks firmly to provide safe and effective contact. The cable is fixed into a socket with two Allen screws.

OKC male 10-25mm <sup>2</sup> ESAB	<b>0160 360 880</b>
OKC male 35-50mm <sup>2</sup> ESAB	<b>0160 360 881</b>
OKC male 70-95mm <sup>2</sup> ESAB	<b>0160 360 882</b>
OKC male 120mm <sup>2</sup> ESAB	<b>0160 360 883</b>
OKC female 10-25mm <sup>2</sup> ESAB	<b>0160 361 880</b>
OKC female 35-50mm <sup>2</sup> ESAB	<b>0160 361 881</b>
OKC female 70-95mm <sup>2</sup> ESAB	<b>0160 361 882</b>
OKC female 120mm <sup>2</sup> ESAB	<b>0160 361 883</b>
OKC male 10-25mm Murex (Red)	<b>0701 416 257</b>
OKC male 25-50mm Murex (Red)	<b>0701 416 258</b>
OKC male 50-95mm Murex (Red)	<b>0701 416 259</b>
OKC female 10-25mm Murex (Red)	<b>0701 416 254</b>
OKC female 25-50mm Murex (Red)	<b>0701 416 255</b>
OKC female 50-95mm Murex (Red)	<b>0701 416 256</b>
OKC Adapter 25-50mm	<b>0590 046 800</b>

## ZBK Cable Connection



Fully insulated with neoprene rubber. Sturdy and robust with low contact resistance. The cable is fixed into a socket with two Allen screws. The two halves of the connection in a ZBK connection are identical and can therefore be interchanged in any order.

ZBK 25-35mm <sup>2</sup>	<b>0265 902 482</b>
ZBK 50-70mm <sup>2</sup>	<b>0265 902 481</b>
ZBK 95-120mm <sup>2</sup>	<b>0265 902 480</b>

# Connectors & Electrode Holders



## OKC Machine Contacts & Angle Connection



The contacts should be mounted on the front panel of the machine and come in three dimensions. The angle connection is supplied as OKC 50-95 male and female.

OKC machine contact for OKC 25	<b>0160 362 880</b>
OKC machine contact for OKC 50/95	<b>0160 362 881</b>
OKC machine contact for OKC 120	<b>0160 362 882</b>
Type 1 Angle connection, 1 male, 2 female	<b>0365 557 001</b>
Type 2 Angle connection, 2 male, 1 female	<b>0365 558 001</b>

## CC17/18 Connectors



These heavy-duty connectors feature the cone and bush design of cable connection. They have high quality black rubber boots with positive lock and seal. They will accept up to 70mm<sup>2</sup> copper or aluminium cable.

CC17 Plug	<b>0700 606 402</b>
CC18 Socket	<b>0700 606 403</b>

# Electrode Holders

## Electrode Holder ESAB 200, 400 and 500



ESAB's CE-approved screw-type electrode holder offers many advantages including:  
 Excellent current transfer between electrode and holder  
 Two hole positions at 45 and 90 for welding in different positions  
 Electrode cable held in place by two Allen screws  
 All electrode holders are fully insulated to provide maximum safety

ESAB 200, 200 A (35%)	<b>0333 249 001</b>
ESAB 400, 400 A (35%)	<b>0369 849 880</b>
ESAB 500, 500 A (35%)	<b>0369 850 880</b>

## Electrode Holder Optimus



A closed head electrode holder allowing the electrode to be fitted either horizontally or vertically. The electrode holder is made of glassfibre-reinforced plastic. All Optimus electrode holders are fully insulated.

Optimus 300, 400 A (35%)	<b>0760 001 300</b>
Optimus 400, 500 A (35%)	<b>0760 001 400</b>
Optimus 600, 600 A (35%)	<b>0760 001 600</b>

# Electrode Holders



## Electrode Holder Samson

An open head electrode holder, the Samson is the 'classic' electrode tong design of electrode holder, made of a glassfibre-reinforced plastic. All Samson electrode holders are fully insulated.

Samson 300, 300 A (60%)	<b>0760 002 300</b>
Samson 400, 400 A (60%)	<b>0760 002 400</b>
Samson 500, 500 A (60%)	<b>0760 002 500</b>



## Eco Holder Handy

A 'screw type' electrode holder with a fully insulated head and handle.

Handy 200, 200 A (35%)	<b>0700 006 003</b>
Handy 300, 300 A (35%)	<b>0700 006 016</b>
Handy 400, 400 A (35%)	<b>0700 006 013</b>



## Eco Holder Comfort

An open head electrode holder with a fully insulated head and handle.

Comfort 200, 200 A (35%)	<b>0700 006 004</b>
Comfort 300, 300 A (35%)	<b>0700 006 005</b>
Comfort 400, 400 A (35%)	<b>0700 006 015</b>



## Eco Holder Prima

A closed head electrode holder with a fully insulated head and handle.

Prima 200, 200 A (35%)	<b>0700 006 006</b>
Prima 300, 300 A (35%)	<b>0700 006 007</b>
Prima 400, 400 A (35%)	<b>0700 006 014</b>



## Murex Handicool

This is a crocodile style electrode holder, which is made from black phenolic resin insulated jaws and black handle. The holder is fully insulated for extra safety and copper jaws for good contact.

400A Handicool Electrode Holder	<b>0700 605 376</b>
600A Handicool Electrode Holder	<b>0700 605 378</b>

# Electrode Holders & Clamps



## Murex Econ

This is a twist grip, short stub electrode holder. All the electrode is available for use and the angle allows the hand to remain away from the weld pool. The handle is used to apply torque to the electrode clamp in the head.

Econ 405 Electrode Holder	<b>0701 380 433</b>
Econ 605 Electrode Holder	<b>0701 380 434</b>

## Return Clamps



## MK 150, MP 200, MP 300 and MP450

The MK 150 is a fully galvanised earth clamp with a maximum opening of 50mm. The MP 200, MP 300 and MP 450 are robust earth clamps with strong gripping power for good contact. The maximum opening for the MP 200 is 50mm and 55mm and 60mm for the MP 300 and MP 450 respectively.

MK 150, 150 A (35%)	<b>0682 103 801</b>
MP 200, 200 A (35%)	<b>0367 558 880</b>
MP 300, 300 A (35%)	<b>0682 103 803</b>
MP 450, 450 A (35%)	<b>0000 419 450</b>



## Eco Clamps

An earth clamp that provides good contact with the work piece and is available in two sizes.

Eco clamp 250, 250 A (35%)	<b>0700 006 001</b>
Eco clamp 400, 400 A (35%)	<b>0700 006 002</b>



## Return Clamp EG 600 and JK3

The EG 600 is an extremely robust earth clamp made of brass. The welding cable is attached using a hexagonal socket screw and the clamp has a maximum opening of 50mm and a maximum capacity of 600 amperes. The JK3 is a C-clamp model, galvanised and with a maximum opening of 48mm and maximum capacity of 500 amperes.

EG 600, 600 A (35%)	<b>0160 288 001</b>
JK3, 500 A (35%)	<b>0000 103 588</b>



# Clamps



## Return Clamp CC11

This clamp is robustly constructed from substantial castings. The screw lever allows maximum compression to the workpiece. Suitable for up to 600 amps.

CC11 Screw Type Earth Clamp **0701 400 000**



## Magnetic Earth Clamps

Magnetic earth clamps with strong gripping power that permits attachment to any ferrous object. These clamps provide a large contact area with less overheating thanks to fewer junctions.

Magnetic earth clamp 400 A (35%) **0000 500 415**

Magnetic earth clamp 600 A (35%) **0000 500 416**



# Couplings & Clamps for Rotating Workpieces



## Rotatable Earth Couplings

A good connection to the workpiece is needed to obtain optimal manual or automatic welding. For rotating workpieces, an earth connection with a rotatable earth coupling is the safest choice. A range of current couplings is available. To attach the coupling to the workpiece, special clamps are available. (Please see: Return clamps for rotating workpieces).

NKK 400 - max 400 A, (1.65kg)	<b>0000 595 133</b>
NKK 600 - max 600 A, (2.2kg)	<b>0700 004 007</b>
NKK 800 - max 800 A, (2.7kg)	<b>0700 004 001</b>
NKK 1200 - max 1200 A, (4.0kg)	<b>0700 004 002</b>
NKK 2000 - max 2000 A, (7.3kg)	<b>0700 004 003</b>



## Return Clamps for Rotating Workpieces

The earth clamps K2 or PZ3 can be mounted directly on to the rotatable earth coupling to create a good contact between the work piece and the return cable. The return clamps can also be used together with the GA 800 to form a complete earth clamp that can handle high current welding on non-rotating work pieces.

GA 800 - handle connection for K2 **0700 004 005**



K2 - clamp head for NKK 800 or 1200 **0700 004 004**



PZ3 - pole clamp for NKK 2000 **0700 004 006**





## ESAB Pre-Weld Anti Spatter

The ESAB Pre-Weld fluid is so much more than a traditional anti spatter. ESAB have managed to develop a product that has a much higher concentration of the active substance than any other product available. The product does not evaporate off the work piece, it gives extraordinary protection all the way from the very edge of the weld and out across the work piece. But still the product is completely safe, no dangerous/harmful substances are included. The fluid is absolutely silicon free and water-soluble, there are no problems with painting or with any other after treatments. The spray can contains 600 ml of active fluid, no solvents. The fluid is kept in an aluminium bag inside the can. The pressure surrounding the bag forces the fluid out when the valve is opened. This allows the can to be sprayed at any angle and still allows you to get every drop of fluid from the can. Note that it is only active fluid that is released, this is what makes the product so efficient.

ESAB Pre-Weld anti spatter 600 ml	<b>0700 013 013</b>
ESAB Pre-Weld anti spatter 10 litre	<b>0700 013 014</b>
ESAB Pre-Weld anti spatter 25 litre	<b>0700 013 015</b>
Tap for 10 litre	<b>0700 014 017</b>
Tap for 25 litre	<b>0700 014 018</b>
Hand spray bottle	<b>0000 138 408</b>



## ESAB High-Tech Anti Spatter

Combines uncompromising efficiency with active environmental and health protection. The High-Tech spray effectively prevents spatter from sticking on the work piece. The High-Tech weld-protect air-spray is absolutely non-combustible, has no toxic classification, uses no harmful gases and is safe for the skin. The propellant is compressed air, it is solvent free and gives no indirect air pollution or contribution to the greenhouse effect. It is absolutely silicon-free and water-soluble.

High-Tech 400 ml	<b>0760 025 500</b>
High-Tech 10 litre	<b>0760 025 010</b>
High-Tech 25 litre	<b>0760 025 025</b>
Tap for 10 litre	<b>0700 014 017</b>
Tap for 25 litre	<b>0700 014 018</b>
Hand spray bottle	<b>0000 138 408</b>



## ESAB Eco-Tech Anti Spatter

The ESAB Eco-Tech is a high performing anti spatter spray, which is completely safe, both for the welder and environment. The propellant is compressed air, hence it is completely none-combustible. The solvent free liquid should be applied in a thin layer before welding. The Eco-Tech is water based and does not contain anything that can interfere with painting, galvanising or any other after treatments.

ESAB Eco-Tech anti spatter 300 ml	<b>0700 013 007</b>
ESAB Eco-Tech anti spatter 10 litre	<b>0700 013 008</b>
ESAB Eco-Tech anti spatter 25 litre	<b>0700 013 009</b>
Tap for 10 litre	<b>0700 014 017</b>
Tap for 25 litre	<b>0700 014 018</b>
Hand spray bottle	<b>0000 138 408</b>



## ESAB Jig and Tool Protection

The ESAB Jig and Tool protection prolongs the lifetime of the welding shroud and contact tip as well as giving an extremely good protection to tools and jigs. The spray dries quickly and leaves a heat resistant layer (1300°C) and it does not burn off. Hardly any spatter sticks to the surface and if it does, a gentle wipe with the glove will remove it.

ESAB Jig and Tool protection, 400 ml	<b>0700 013 016</b>
--------------------------------------	---------------------



## ESAB Spatter Shield

The ESAB Spatter shield prolongs the lifetime of the welding shroud and contact tip. Apply the fluid by dipping the torch and let the fluid dry. The fluid creates a heat resistant layer that prevents spatter from sticking. The spatter shield should be applied 2-3 times per 8-hour shift to give protection. Unlike tip dip products, when using the ESAB spatter shield you will NOT experience any problems with porosity created by drops of anti spatter falling down into the weld.

ESAB Spatter shield, 250 ml	<b>0700 013 017</b>
-----------------------------	---------------------



## Clean Weld Welding Paste

Prevents spatter from sticking as it forms a heat-resistant coat. The hot gas nozzle on the welding torch should be dipped about 20-25mm into the paste for effective results. Odourless and contains no solvents, silicone or abrasive agents and is delivered in a 0.5kg metal can.

Clean Weld welding paste, net weight 0.5kg	<b>0365 560 001</b>
--	---------------------



## Non Destructive Testing Aerosols

The ESAB NDT testing should be used to identify cracks in a weld. The process consists of 6 steps and to perform the test a cleaner, a penetrant and a developer is required. The procedure should be as follows:

1. Use ESAB cleaner and wipe dry.
2. Spray ESAB Penetrant, leave for 15 min.
3. Wipe away the penetrant from the surface.
4. Use the cleaner in a dry cloth, wiping in one direction only. Wipe dry.
5. Shake and then spray on the developer, leave for 10 min then see results.
6. Remove the developer and dye using the cleaner.

ESAB NDT Penetrant 300 ml Aerosol	<b>0700 013 018</b>
ESAB NDT Developer 400 ml Aerosol	<b>0700 013 019</b>
ESAB NDT Cleaner 300 ml Aerosol	<b>0700 013 020</b>



# Chemical Sundries & Indicators



## ESAB Leak Detector

The ESAB gas leak detector can be used on the gas hoses leading from the gas cylinders or on the regulators in order to detect a gas leakage. The product is sprayed on and in case of a leakage the liquid will create bubbles. The composition does NOT contain any aggressive substances.

ESAB Leak Detector Pistol Type, 500 ml **0700 013 021**



## ESAB Mask Spray

The ESAB mask spray should be applied to the cover lenses in a helmet to keep them mist free and clean. 300 ml.

Mask spray, 300 ml **0700 013 026**



## Protective UV-Cream

ESAB's UV skin-protection cream protects the parts of the body that are exposed to UV rays during welding or welding inspections. This cream is also water-resistant. Sunshade factor 19.

Protective cream, 100 ml **0349 501 033**



## Weld Marker

The ESAB weld marker marks all metal, wood, plastic, glass and hard surfaces. Low chloride colour makes it safe for marking stainless steel. Do not roll tube. Dries in five minutes.

Weld marker, white **0700 013 003**  
Metal marker, yellow **0701 415 418**



## Weld Marker Kit

The weld marker kit consists of three differently coloured pens, red, green and black. The pens can be used on most types of material.

Weld marker kit **0700 013 004**

# Chipping Hammers



## Pneumatic Chipping Hammer HCB

This high impact speed chipping hammer produces virtually no vibration in the hand as a result of a built-in balance system, which absorbs recoil and counteracts shaking. A range of chisels are available for the HCB, they all have a tungsten-carbide tip and offer a long service life. Narrow chisel: 15mm wide for normal de-slugging and cleaning. Wide chisel: 35mm wide for removing spatter and de-burring after gas cutting.

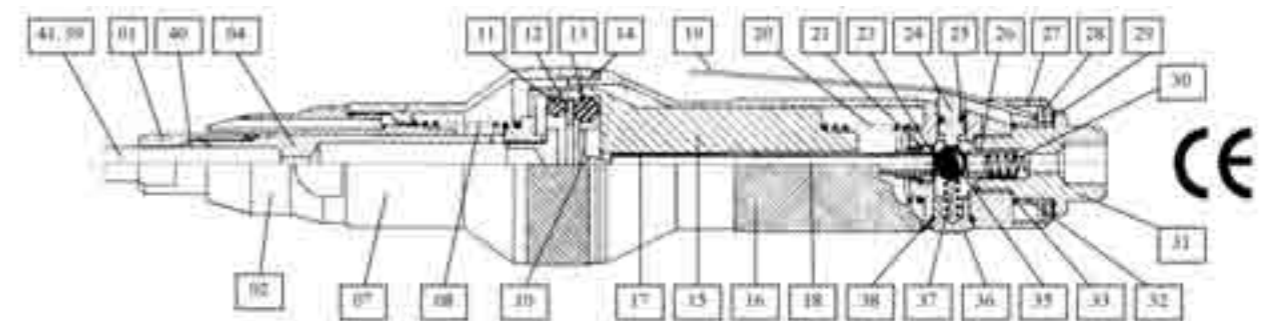
Chipping hammer HCB **0193 305 001**

## Spares for Pneumatic Chipping Hammer HCB (Fig 18)

1	Nut HCB	<b>0156 626 001</b>	26	Ball Retainer	<b>0156 626 022</b>
2	Front Housing HCB	<b>0193 306 004</b>	27	Cover HCB	<b>0156 626 023</b>
4	Impact Piston Compl.	<b>0156 626 004</b>	28	Washer HCB	<b>0156 626 024</b>
7	Housing HCB	<b>0156 626 007</b>	29	Securing Ring HCB	<b>0156 626 025</b>
8	Spring HCB	<b>0156 626 008</b>	31	Nipple HCB	<b>0156 626 027</b>
10	Air Feed Valve	<b>0193 306 012</b>	32	Sleeve HCB	<b>0156 626 028</b>
11	O-Ring HCB	<b>0156 626 009</b>	33	O-Ring HCB	<b>0156 626 029</b>
12	Ring Valve HCB	<b>0156 626 010</b>	35	Valveball HCB	<b>0156 626 031</b>
13	O-Ring HCB	<b>0156 626 011</b>	36	Screw HCB	<b>0156 626 032</b>
14	Locking Ring HCB	<b>0156 626 012</b>	37, 30	Spring HCB	<b>0156 626 026</b>
15	Balancing Piston HCB	<b>0156 626 013</b>	38	O-Ring HCB	<b>0156 626 033</b>
16	Housing HCB	<b>0156 626 014</b>	39	Chisel 15 x 100mm	<b>0156 627 001</b>
17	O-Ring HCB	<b>0193 306 014</b>	39	Chisel 35 x 100mm	<b>0156 627 002</b>
18	Tube Compl HCB	<b>0156 626 015</b>	39	Chisel 15 x 200mm	<b>0156 627 006</b>
19	Trigger HCB	<b>0156 626 016</b>	39	Chisel 15 x 300mm	<b>0156 627 007</b>
20	Spring HCB	<b>0156 626 017</b>	40	Clamp Ring HCB	<b>0156 626 034</b>
21	O-Ring HCB	<b>0156 626 018</b>	41	Sound-damping chisel	<b>0156 627 004</b>
23	O-Ring HCB	<b>0156 626 019</b>	*	Chisel extension	<b>0156 627 005</b>
24	Valve Piston	<b>0156 626 020</b>	*	Stopscrew HCB	<b>0156 626 030</b>
25	O-Ring HCB	<b>0156 626 021</b>			

\* Not shown

## Spares for Pneumatic Chipping Hammer HCB Fig 18



# Chipping Hammers & Fillet Gauges



## Chipping Hammer SH2 and SH3

The SH2 chipping hammer is made of special high-quality steel, and has a user-friendly handle. The SH3 is a small hammer with a chisel and tip and steel handle with a plastic grip.

Chipping hammer SH2	0000 663 000
Chipping hammer SH3	0683 200 001

## Wooden Chipping Hammers

High quality tempered head and wooden handle. Chisel and point ends.

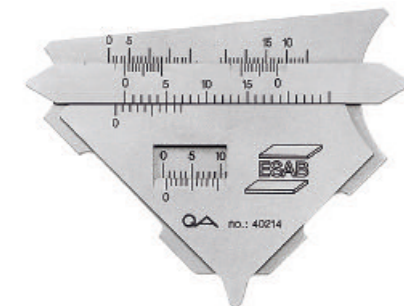
Martellina wood	0000 915 051
Wooden Chipping Hammer TH/5	0701 380 106



## Fillet Gauge KL-1 laser

To measure the A dimension of fillet welds. Two measurement areas: max. 7mm and max. 15mm. Complete with a leather pocket.

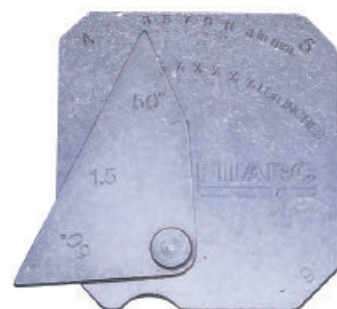
Fillet gauge KL-1 laser	0000 139 931
-------------------------	--------------



## Fillet Gauge KL-2 Laser

To measure the A dimension of a fillet welds, the leg (small side of a right-angled triangle) and weld reinforcement height. Complete with leather pocket.

Fillet gauge KL-2 laser	0000 139 932
-------------------------	--------------



## Filarc Fillet Gauge

To measure the a-dimension on measurement area 3-11mm, K-dimension and 50° and 60° groove angle. Also on fast measurement 4, 5, 6 and 7mm a-dimension and gaps of 1.5, 2 and 3.5mm.

Filarc Fillet gauge	0000 593 268
---------------------	--------------

# Fillet Gauges & Small Tools



## INOX Fillet Gauge

To measure the a-dimension of fillet welds and to measure the butted joint weld reinforcement height. Equipped with three scales. Measurement area 0-15mm and measurement sharpness +0,1mm.

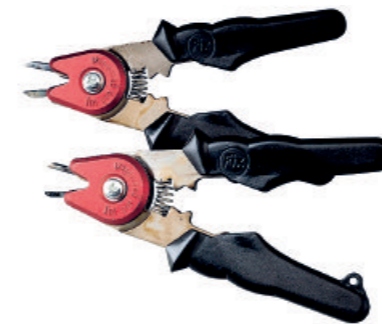
INOX Fillet gauge	0000 593 720
-------------------	--------------



## Universal Tool

Pliers specially designed for MIG/MAG welding. Removes spatter from the nozzle, cuts the wire and the tool makes it easy to remove the contact tip and gas shroud.

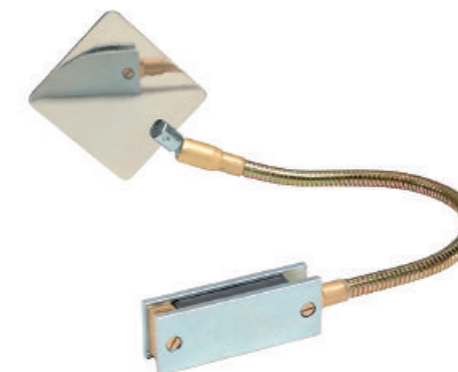
Universal Tool	0000 134 716
Universal Tool Mini	0000 139 054



## Fix Pliers

Fast effective cutting of welding wire and removal of burnt wire. Removes spatter from gas and contact nozzle and can be used for attaching and removing of contact, intermediate and gas nozzles.

Fix 1 12-15mm	0760 022 100
Fix 2 15-18mm	0760 022 200



## Inspection Mirrors

Stainless steel inspection mirror for inspecting welds.

Inspection mirror 500mm, with magnetic base	0000 595 319
---	--------------



# Small Tools



## MIG/MAG Gun Holder

The MIG/MAG gun holder is a simple and practical device for the convenient holding of the MIG/MAG gun when not in use. It is equipped with a magnetic foot for stability and is suitable for use with most MIG/MAG welding guns.

MIG/MAG gun holder **0760 022 300**



## TIG Torch Holder

The TIG torch holder is a simple and practical device for the convenient holding of the TIG torch when not in use. It is equipped with a magnetic foot for stability and is suitable for use with most TIG torches.

TIG torch holder **0760 022 400**



## Magnetic Position Holders

The powerful magnets keep the work piece in place when welding or soldering plates together at angles. The large model can support weights up to 80kg whilst the small one can support up to 45kg.

Magnetic position holder small **0700 014 015**  
Magnetic position holder large **0700 014 016**



## Murex Nozzle Cleaner Set

Prolongs the life of welding and cutting nozzles. Murex nozzle cleaner does not file the nozzle bore. Each set contains a range of nozzle cleaners from 0.46mm to 1.74mm.

Nozzle Cleaner Set **0700 153 391**

# Small Tools



## Murex Combination Spanner

For use with Murex gas equipment. Fits Kennedy nut, hose nut and cylinder valve.

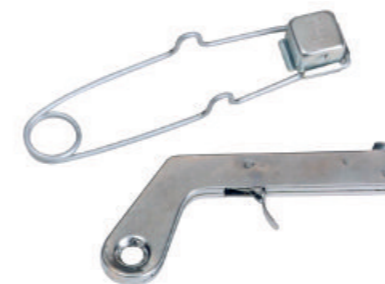
Combination Spanner **0701 414 766**



## Murex Spindle Key

Provides the correct leverage for opening cylinder valves.

Spindle Key K5 **0701 380 120**



## Murex SL3 Cup Sparklighter

A standard cup type sparklighter.

SL3 Cup Sparklighter **0701 380 220**  
SL3 Flints Pk 5 **0701 380 221**

## Murex SL2 Sparklighter Pistol

A pistol type sparklighter.

SL2 Sparklighter Pistol **0700 154 807**  
Flints Pk9 (SL2) **0700 119 695**



## Wire Brushes

Lightweight, easy-to-use steel brushes with wooden handles. Available with two, three or four rows of bristles.

Two-row mild steel brush **0760 024 100**  
Three-row mild steel brush **0760 024 200**  
Murex three-row mild steel brush converging **0700 158 228**  
Four-row mild steel brush **0760 024 300**  
Two-row stainless steel brush **0760 024 500**  
Three-row stainless steel brush **0760 024 600**  
Murex three-row stainless steel brush converging **0700 158 231**  
Four-row stainless steel brush **0760 024 700**



# ***Special Process Equipment***

Completing the extensive accessory portfolio from ESAB is our Special Process Equipment range, which includes tungsten grinders, gouging torches and fume extraction units. As with all our products our Special Process Equipment range conforms to all relevant EU legislation and standards.





## PK 1 Dry-Storage Container

The PK 1 is a light and handy dry-storage container for electrodes. It is easy to carry and has a storage temperature of around 100°C. The heating element runs from the top to the bottom and the top is fully insulated.

Capacity	9kg
Storage temp. (°C)	100
Drying temp. (°C)	N/A
Voltage (V)	24/42/110/230
Output (kW)	0,1
Outer dimension (Ø/height, mm)	225/610
Inner dimension (Ø/height, mm)	100/470
Weight (kg)	6

PK 1, 24 V	<b>0000 515 063</b>
PK 1, 42 V	<b>0000 515 052</b>
PK 1, 110 V	<b>0000 515 062</b>
PK 1, 230 V	<b>0000 515 064</b>



## PK 5 Drying Equipment

The PK 5 is a combined drying and dry-storage system for most types of electrodes. The drying time at full effect is 1-7 hours depending on the type of electrode. The temperature is thermostatically controlled and ranges from 50-300°C. The electrodes should be stored in the PK 5 without packaging. The heating element runs from the top to the bottom and the top is fully insulated.

Capacity	24kg
Storage temp. (°C)	70-300
Drying temp. (°C)	N/A
Voltage (V)	110/230
Output (kW)	0,5
Outer dimension (Ø/height, mm)	345/660
Inner dimension (Ø/height, mm)	116/460
Weight (kg)	13

PK 5 drying equipment, 110 V	<b>0700 011 070</b>
PK 5 drying equipment, 230 V	<b>0000 515 075</b>



## SK 40 Dry-Storage Cabinet

The SK 40 is a dry-storage cabinet with 4 removable shelves for storing electrodes. The electrodes should be stored without packing. The cabinet is equipped with a thermometer, thermostat and control lamp. Temperature range 50-180°C.

Capacity	120kg
Storage temp. (°C)	50-180
Drying temp. (°C)	N/A
Voltage (V)	230
Output (kW)	0,7
Outer dimension (WxDxH, mm)	530 x 640 x 750
Inner dimension (WxDxH, mm)	470 x 510 x 520
Weight (kg)	55

SK 40 dry-storage cabinet, 230 V	<b>0000 515 102</b>
----------------------------------	---------------------



## PK 40 Drying Cabinet

The PK 40 is a robust cabinet for the drying and dry storage of electrodes, with space for 10 packs. The drying time is set manually at between 50 and 350°C. Dimensions 570 x 620 x 790mm. Weight 70kg.

Capacity	72kg
Drying temp. (°C)	50-350
Voltage (V)	230
Output (kW)	1,5
Outer dimension (WxDxH, mm)	570 x 620 x 790
Inner dimension (WxDxH, mm)	460 x 510 x 520
Weight (kg)	70

PK 40 drying cabinet, 230 V	<b>0000 515 105</b>
-----------------------------	---------------------



## PK 410 Drying Cabinet

The PK 410 is a robust cabinet for the drying and dry storage of electrodes. The drying temperature can be regulated between 50 and 400°C (450°C, 3-phase). The dry-storage temperature is around 150°C. The PK 410 is equipped with a control lamp, electronic thermometer and electronic thermostat. The PK 410 also has a 7-day timer. This timer makes it possible to change automatically from drying to dry storage at selected times and temperature ranges.

<b>230V</b>	
Capacity	252kg
Storage temp. (°C)	50-400
Drying temp. (°C)	50-400
Voltage (V)	230
Output (kW)	3,5
Outer dimension (WxDxH, mm)	860 x 760 x 1280
Inner dimension (WxDxH, mm)	655 x 485 x 635
Weight (kg)	230

<b>400V</b>	
Capacity	252kg
Storage temp. (°C)	50-400
Drying temp. (°C)	50-400
Voltage (V)	400-3
Output (kW)	4,5
Outer dimension (WxDxH, mm)	860 x 760 x 1280
Inner dimension (WxDxH, mm)	665 x 485 x 635
Weight (kg)	230

PK 410 drying cabinet, 230 V, 1-phase	<b>0000 515 103</b>
PK 410 drying cabinet, 400 V, 3-phase	<b>0000 515 108</b>

# ESAB Drying Equipment



## JS 200 Storage Silo

The JS 200 is a storage silo for welding powder (flux). The JS 200 keeps the flux dry and clean and also makes it extremely easy to handle the flux. The temperature can be adjusted between 100 and 300°C.

Capacity	200 Lt
Storage temp. (°C)	100-300
Drying temp. (°C)	N/A
Voltage (V)	230
Output (kW)	2
Outer dimension (WxDxH, mm)	510 x 570 x 1755
Weight (kg)	110

JS 200 storage silo **0000 515 090**

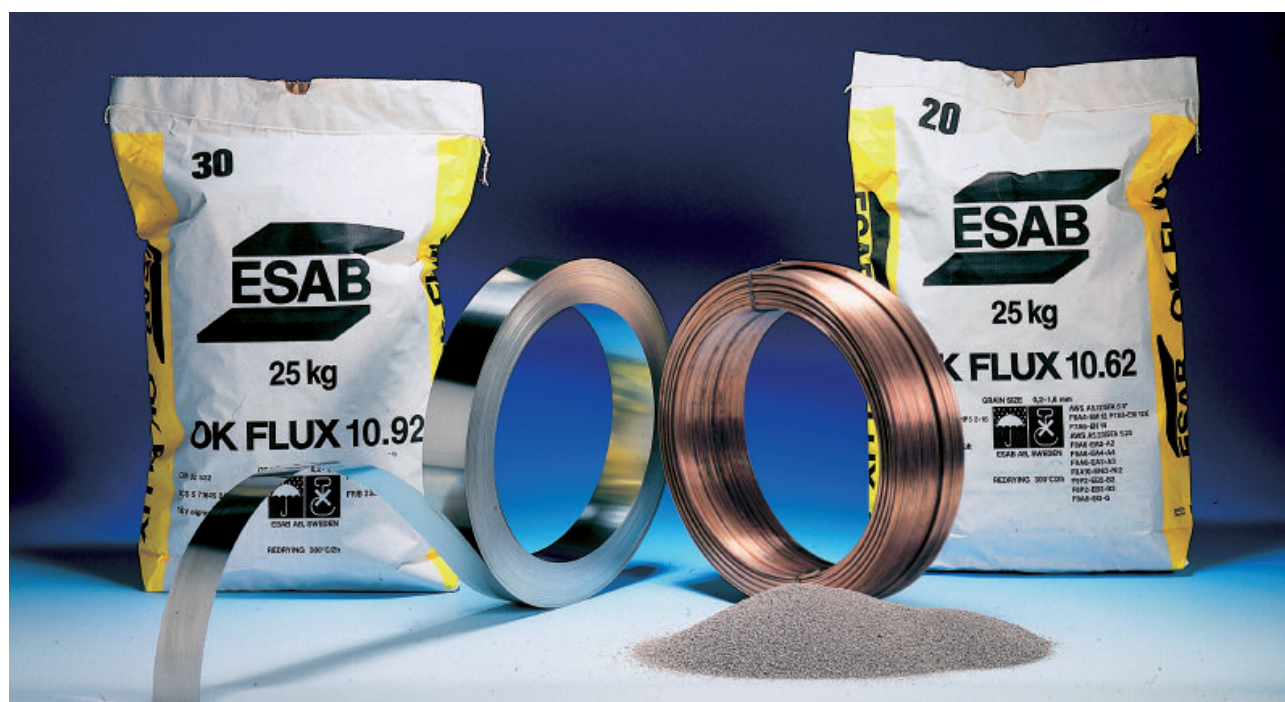


## JK 50 Powder Drier

The JK 50 is a container for drying and storing welding powder (flux). The JK 50 dries 50 litre flux at a maximum temperature of 500°C in around three hours. After drying, the temperature falls automatically to the pre-set dry storage temperature (150°C) within 12 hours.

Capacity	50 Lt
Storage temp. (°C)	50-250
Drying temp. (°C)	50-500
Voltage (V)	400-3
Output (kW)	3,7
Outer dimension (Ø/height, mm)	860/1600
Weight (kg)	190

JK 50, 400 V, 3-phase **0000 515 091**





# Alternative Drying Ovens



## Stationary Drying Oven Digital

As the Stationary Oven, but with a digital display.

Temperature range	0-300°C thermostatically controlled
Supply	110/240v. (Dual voltage)
Load	1500 watts
Overall dimensions (WxDxH, mm)	530 x 620 x 620
Internal dimensions (WxDxH, mm)	465 x 480 x 465
Weight Empty	45kg
Capacity	136kg of Welding Electrodes
Digital Display	YES

---

Stationary Oven Digital 250V AC	<b>0701 502 381</b>
---------------------------------	---------------------

## High Temperature Ovens

The robust, high temperature oven has a digital display. It has accurate temperature control from 0 – 500°C. Visual temperature indication is by the digital display. Temperature settings are digitally set.

Temperature range	0-500°C thermostatically controlled
Supply	110 or 240v
Load	3 Kw
Outer dimensions (WxDxH, mm)	600 x 685 x 760
Internal dimensions (WxDxH, mm)	470 x 480 x 470
Weight Empty	75kg
Capacity	136kg of Welding Electrodes
Digital Display	YES

---

High Temp Oven – Digital Display	<b>0701 380 408</b>
----------------------------------	---------------------

### As above but with Chart Recorder

Storage Temperature	0-500°C
Hold Cycle 1	YES
Baking Temperature	0-500°C
Hold Cycle 2	YES
Supply	110 or 240v
Load	3 Kw
Delay Timer	7-Day Programmable
Chart Recorder	Optional
Outer dimensions (WxDxH, mm)	600 x 685 x 760
Internal dimensions (WxDxH, mm)	470 x 480 x 470
Weight Empty	75kg
Capacity	136kg of Welding Electrodes
Digital Display	YES

---

High Temp Oven – CR DD Timer	<b>0701 380 410</b>
------------------------------	---------------------

# Spare Parts

## Spare Parts for ESAB PK1

Heating Element 24V	<b>0700 011 001</b>	Signal Lamp 110V	<b>0700 011 007</b>
Heating Element 42V	<b>0700 011 002</b>	Signal Lamp 230V	<b>0700 011 008</b>
Heating Element 110V	<b>0700 011 003</b>	Hinged Lid	<b>0700 011 010</b>
Heating Element 230V	<b>0700 011 004</b>	Knob	<b>0700 011 011</b>
Signal Lamp 24V	<b>0700 011 005</b>	Handle	<b>0700 011 012</b>
Signal Lamp 42V	<b>0700 011 006</b>		

## Spare Parts for ESAB PK5

Heating Element	<b>0700 011 015</b>	Thermostat	<b>0700 011 017</b>
Signal Lamp	<b>0700 011 016</b>	Thermometer	<b>0700 011 018</b>

## Spare Parts for ESAB SK40

Heating Element	<b>0700 011 020</b>	Thermostat	<b>0700 011 023</b>
Signal Lamp Red	<b>0700 011 021</b>	Thermometer	<b>0700 011 024</b>
Signal Lamp Green	<b>0700 011 022</b>		

## Spare Parts for ESAB PK40

Heating Element, Top	<b>0700 011 071</b>	Thermostat	<b>0700 011 073</b>
Heating Element, Bottom	<b>0700 011 072</b>	Contactator	<b>0700 011 074</b>

## Spare Parts for ESAB PK410

EMC-Filter	<b>0700 011 039</b>	Controller	<b>0700 011 045</b>
Heating Element, Top	<b>0700 011 040</b>	Sensor	<b>0700 011 046</b>
Heating Element, Bottom	<b>0700 011 041</b>	Timer	<b>0700 011 047</b>
Signal Lamp Green Big	<b>0700 011 042</b>	Contactator	<b>0700 011 048</b>
Signal Lamp Red Big	<b>0700 011 043</b>	Main Switch	<b>0700 011 049</b>
Signal Lamp Red, Small	<b>0700 011 044</b>	Auto-Manual Switch	<b>0700 011 050</b>

## Spare Parts for ESAB JS200

Heating Element	<b>0700 011 030</b>	Thermostat	<b>0700 011 032</b>
Signal Lamp	<b>0700 011 031</b>	Thermometer	<b>0700 011 033</b>

## Spare Parts for JK50

Heating element	<b>0700 011 082</b>
-----------------	---------------------

## Spare Parts for Murex Drying Equipment

Element Stat Oven 240v Pk 2	<b>0701 380 149</b>	Element 240V Kit (Portable Oven)	<b>0701 411 237</b>
Element 110V (Quiver)	<b>0701 380 487</b>	Thermostat 110/240V (Ovens)	<b>0701 411 240</b>
Toggle Switch (Quiver)	<b>0701 380 488</b>		

# Tungsten Grinders



# Tungsten Grinders



## G-Tech Handy II

The G-Tech Handy II is a portable enclosed Tungsten Electrode grinder, which is easy to operate. The Tungsten electrode can be ground without using a holder or tool. The grinding head can be adjusted in three different positions: 0, 1 and 2. In each position another part of the grinding disc will be used, and both sides of the disc can be utilised, giving extended use and reduced cost.

The G-Tech Handy II features a multifunctional cover, which allows the electrode to be ground in a 90° angle. The machine is prepared for fixing to a table using the accessories included.

The G-Tech Handy II is delivered complete for grinding of tungsten electrodes in the dimension of 1,6 – 2,0 - 2,4 - 3,2 mm. A head for grinding of 1,0 – 4,0 – 4,8 – 6,0 mm electrodes can be supplied as an option.

- The G-Tech Handy II features:
- Ergonomic Design & Lightweight
  - Adjustable Grinding Angles (20° - 60°)
  - Double Sided Grinding Disc – Coated with Diamante Powder
  - Allows Exact Repetition of Longitudinal Grinding
  - Can be Connected to a Vacuum Cleaner
  - Option: Orbital-Set for Grinding of Short Tungsten-Electrodes with a length up to 15mm Max

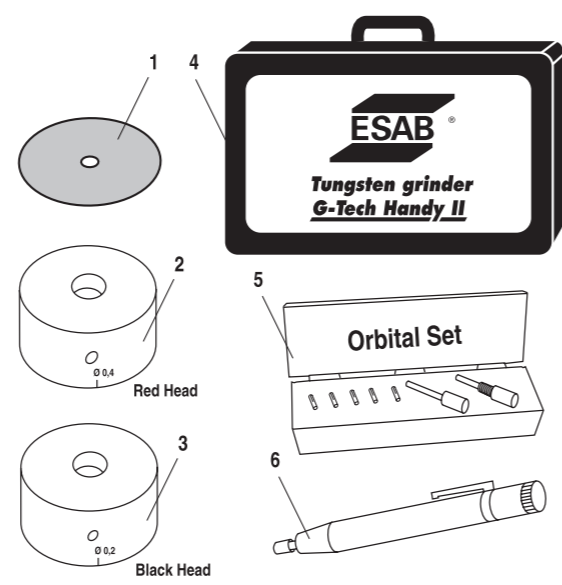
G-Tech Handy II Complete 240V/50Hz **0700 009 886**  
 G-Tech Handy II complete US version with 120V/50Hz **0700 009 067**



## Spares for G-Tech Handy II (Fig 19)

- |   |                     |
|---|---------------------|
| 1 Grinding Disc   | <b>0700 009 068</b> |
| 2 Second Head for Diameters<br>1, 0/4, 0/4, 8/6, 0mm Red        | <b>0700 009 069</b> |
| 3 Replacement Head for Diameters<br>1, 6/2, 0/2, 4/3, 2mm Black | <b>0700 009 070</b> |
| 4 Orbital set for Grinding of Short<br>Tungsten Electrodes      | <b>0700 009 071</b> |
| 5 Clamp Holder 'Spannfix' Size I (85mm)                         | <b>0700 009 072</b> |
| 6 Solid Metal Box 'ESAB'  | <b>0700 009 073</b> |

Spares for G-Tech Handy II Fig 19



## G-Tech Handy

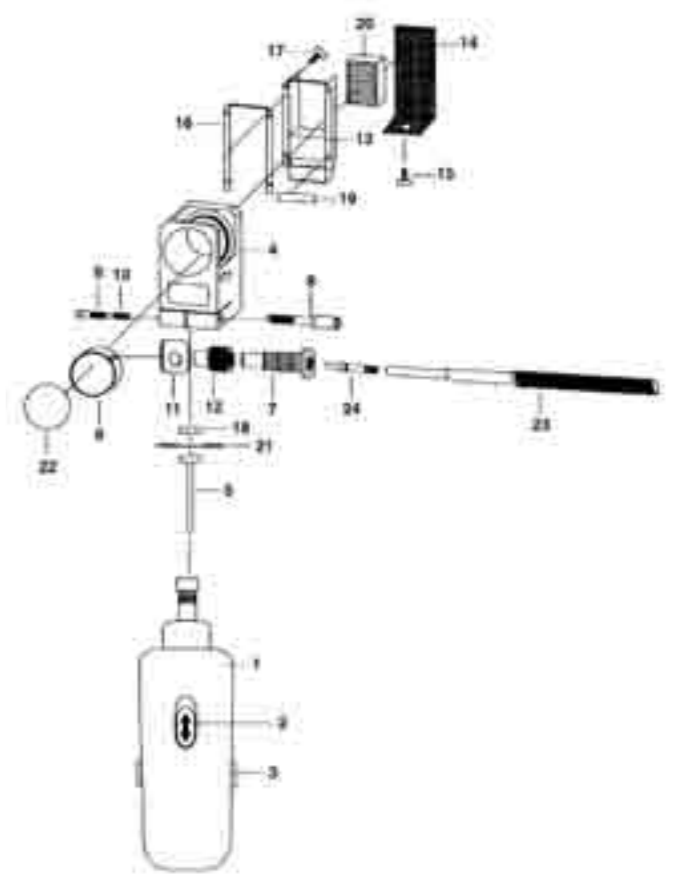
The G-Tech Handy is an easy to use tungsten electrode grinder. The grinding angle can be adjusted easily, using just one hand. The G-Tech Handy grinds electrodes with dimensions of 1.0 to 4.0mm and it is equipped with a dust filter. The speed (rpm) can be adjusted and the unit weighs just 2.8kg. The G-Tech Handy is delivered in a durable hard case that makes it easy to transport.

G-Tech Handy, 230 V, 50 Hz **0700 009 883**

## Spares for G-Tech Handy (Fig 20)

- |                                      |                     |
|--------------------------------------|---------------------|
| 1 Motor 230 V                        | <b>0700 009 041</b> |
| 2 ON/Off switch                      | <b>0700 009 042</b> |
| 3 Carbon brush                       | <b>0700 009 044</b> |
| 4 Grinding head                      | <b>0700 009 045</b> |
| 5 Spindle for diamond disc           | <b>0700 009 046</b> |
| 6 Grinding chamber                   | <b>0700 009 047</b> |
| 7 Guide for electrode holder         | <b>0700 009 048</b> |
| 8 Allen key                          | <b>0700 009 049</b> |
| 9 Allen screw                        | <b>0700 009 050</b> |
| 10 Spring                            | <b>0700 009 056</b> |
| 11 Grinding position selector        | <b>0700 009 051</b> |
| 12 Screw                             | <b>0700 009 052</b> |
| 13 Filter housing                    | <b>0700 009 053</b> |
| 14 Filter cover                      | <b>0700 009 054</b> |
| 15 Allen key to fit the filter cover | <b>0700 009 055</b> |
| 16 Rubber seal big                   | <b>0700 009 057</b> |
| 17 Screw to fit filter cassette      | <b>0700 009 058</b> |
| 18 Screw to fit diamond disc         | <b>0700 009 059</b> |
| 19 Rubber seal small                 | <b>0700 009 060</b> |
| 20 Filter cassette                   | <b>0700 009 029</b> |
| 21 Diamond disc                      | <b>0700 009 028</b> |
| 22 Inspection glass                  | <b>0700 009 037</b> |
| 23 Electrode holder                  | <b>0700 009 030</b> |
| 24 Collet body 1,0mm                 | <b>0700 009 034</b> |
| 24 Collet body 1,6mm                 | <b>0700 009 031</b> |
| 24 Collet body 2,0mm                 | <b>0700 009 035</b> |
| 24 Collet body 2,4mm                 | <b>0700 009 032</b> |
| 24 Collet body 3,2mm                 | <b>0700 009 033</b> |
| 24 Collet body 4,0mm                 | <b>0700 009 036</b> |
| Case for the machine<br>(not shown)  | <b>0700 009 061</b> |

SPARES FOR G-TECH HANDY Fig 20





# Tungsten Grinders & Electrodes



## G-Tech and Spares

The ESAB G-Tech is a tungsten-electrode grinder with a unique enclosed wet-grinding system. A wet grinding system is the most effective protection from thoriated tungsten grinding dust. All dust is collected in the liquid and the risk of oxidation of the electrode is reduced. The grinding angle can be adjusted and the tip can be ground in a 90 degrees angle to make it less pointed. The small table seen in the picture is not included and is not available from ESAB.

G-Tech 230V, 50Hz	<b>0700 009 880</b>
G Tech 115V 50Hz (UK)	<b>0700 009 881</b>
Gasket	<b>0700 009 001</b>
Diamond Disc, G-Tech (inc nut)	<b>0700 009 002</b>
Liquid 250 ml	<b>0700 009 004</b>
Return Bottle 250 ml	<b>0700 009 005</b>
Collet Body 1,0mm G-Tech	<b>0700 009 007</b>
Collet Body 1,6mm G-Tech	<b>0700 009 008</b>
Collet Body 2,0mm G-Tech	<b>0700 009 018</b>
Collet Body 2,4mm G-Tech	<b>0700 009 009</b>
Collet Body 3,2mm G-Tech	<b>0700 009 010</b>
Collet Body 4,0mm G-Tech	<b>0700 009 011</b>
Collet Body 4,8mm G-Tech	<b>0700 009 019</b>
T-Piece	<b>0700 009 012</b>
Spacer Piece	<b>0700 009 013</b>
Liquid 5000 ml	<b>0700 009 015</b>
Accessory box complete	<b>0700 009 016</b>
Waste Container	<b>0700 009 017</b>
Accessory box complete	<b>0700 009 020</b>
Inspection Glass	<b>0700 009 037</b>
Kit – Inspection window G-Tech with seal	<b>0700 009 038</b>
Kit – Electrode holder and handle	<b>0700 009 039</b>
Kit – Seal abrasive wheel with seal and 'O' ring	<b>0700 009 040</b>

## TIG Pen

The TIG PEN allows the welder to control the tip of the filler wire with great accuracy even at a long distance from the weld seam and in the process helps the welder to obtain a higher quality weld. It also eliminates waste of the filler wire. The TIG Pen can be used with any wire diameter from 1.0 to 3.2mm

TIG Pen	<b>0700 009 026</b>
---------	---------------------



# Tungsten Electrodes



## Tungsten Electrodes



This is a high-quality range of tungsten electrodes available in thoriated, ceriated, pure and lanthanated (Gold Plus) versions. ESAB tungsten electrodes have excellent welding and ignition properties. They are delivered in plastic boxes, each containing ten electrodes. The electrodes are available in 150 and 175mm lengths.

WT20 1,0 x 175mm (Thoriated) Red	<b>0151 574 001</b>
WT20 1,6 x 175mm (Thoriated) Red	<b>0151 574 002</b>
WT20 2,4 x 175mm (Thoriated) Red	<b>0151 574 003</b>
WT20 3,2 x 175mm (Thoriated) Red	<b>0151 574 004</b>
WT20 4,0 x 175mm (Thoriated) Red	<b>0151 574 005</b>
W Pure 1,0 x 175mm Green	<b>0151 574 008</b>
W Pure 1,6 x 175mm Green	<b>0151 574 009</b>
W Pure 2,4 x 175mm Green	<b>0151 574 010</b>
W Pure 3,2 x 175mm Green	<b>0151 574 011</b>
W Pure 4,0 x 175mm Green	<b>0151 574 012</b>
WC20 1,0 x 175mm (Ceriated) Grey	<b>0151 574 036</b>
WC20 1,6 x 175mm (Ceriated) Grey	<b>0151 574 037</b>
WC20 2,4 x 175mm (Ceriated) Grey	<b>0151 574 038</b>
WC20 3,2 x 175mm (Ceriated) Grey	<b>0151 574 039</b>
WC20 4,0 x 175mm (Ceriated) Grey	<b>0151 574 040</b>
WL15 1,0 x 175mm Gold Plus (Lanthanated) Gold	<b>0151 574 050</b>
WL15 1,6 x 175mm Gold Plus (Lanthanated) Gold	<b>0151 574 051</b>
WL15 2,4 x 175mm Gold Plus (Lanthanated) Gold	<b>0151 574 052</b>
WL15 3,2 x 175mm Gold Plus (Lanthanated) Gold	<b>0151 574 053</b>
WL15 4,0 x 175mm Gold Plus (Lanthanated) Gold	<b>0151 574 054</b>
WL15 4,8 x 175mm Gold Plus (Lanthanated) Gold	<b>0151 574 055</b>
WT20 1,0 x 150mm (Thoriated) Red	<b>0151 574 201</b>
WT20 1,6 x 150mm (Thoriated) Red	<b>0151 574 202</b>
WT20 2,0 x 150mm (Thoriated) Red	<b>0151 574 244</b>
WT20 2,4 x 150mm (Thoriated) Red	<b>0151 574 203</b>
WT20 3,2 x 150mm (Thoriated) Red	<b>0151 574 204</b>
WT20 4,0 x 150mm (Thoriated) Red	<b>0151 574 205</b>
W Pure 1,0 x 150mm Green	<b>0151 574 208</b>
W Pure 1,6 x 150mm Green	<b>0151 574 209</b>
W Pure 2,0 x 150mm Green	<b>0151 574 245</b>
W Pure 2,4 x 150mm Green	<b>0151 574 210</b>
W Pure 3,2 x 150mm Green	<b>0151 574 211</b>
W Pure 4,0 x 150mm Green	<b>0151 574 212</b>
WC20 1,0 x 150mm (Ceriated) Grey	<b>0151 574 236</b>
WC20 1,6 x 150mm (Ceriated) Grey	<b>0151 574 237</b>
WC20 2,0 x 150mm (Ceriated) Grey	<b>0151 574 242</b>
WC20 2,4 x 150mm (Ceriated) Grey	<b>0151 574 238</b>
WC20 3,2 x 150mm (Ceriated) Grey	<b>0151 574 239</b>
WC20 4,0 x 150mm (Ceriated) Grey	<b>0151 574 240</b>



# Gouging Torches



## K4000 (Fig 21)

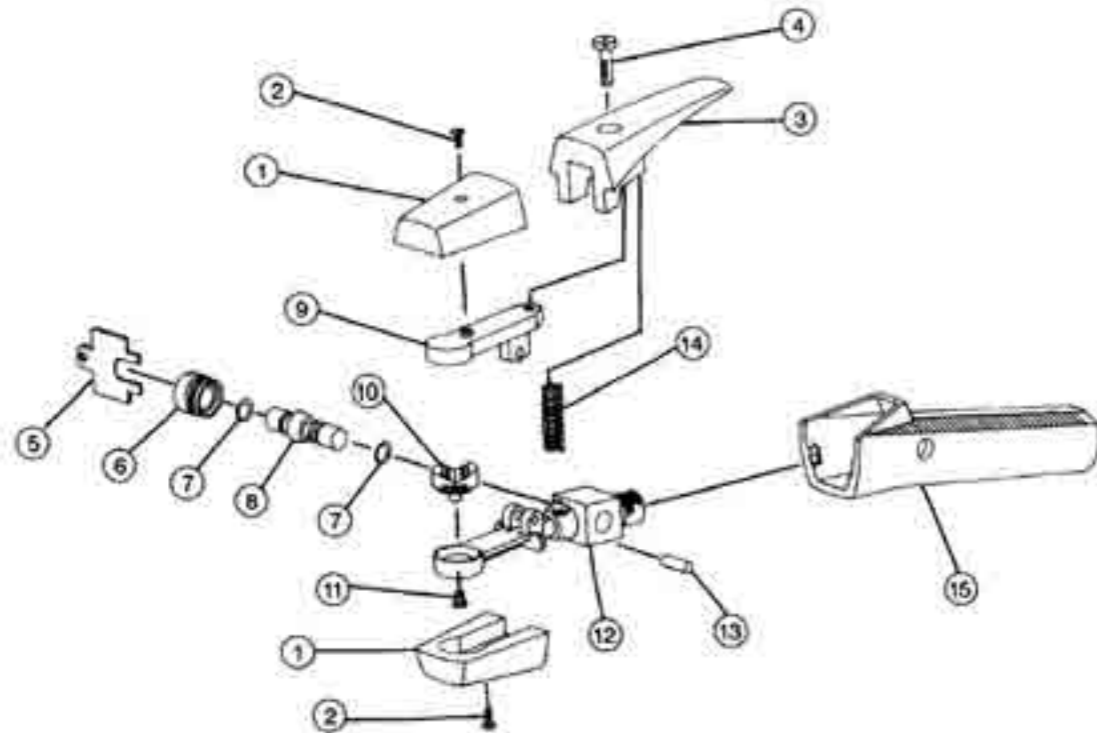
The arc air gouging torch is supplied with a 2.14m (7') long cable. The torch accepts both round and flat electrodes, ranging in size from 4mm (5/32") to 13mm (1/2") round electrodes and 10mm (3/8") and 16mm (5/8") flat electrodes. The K4000 is rated at 1,000 Amps, it uses compressed air between 5.6 and 7.0kg/cm<sup>2</sup> (80 and 100 psi) and between 0.85 and 0.99 m<sup>3</sup>/min (30 and 35 cfm). The torch and cable weigh 2.4kg (5.4lbs). Supplied without connections.

Gouging torch including monocable	<b>0760 018 100</b>
K4000 torch	<b>0760 018 110</b>
Mono cable K4000	<b>0760 018 119</b>
1 & 2 Insulator assembly	<b>0760 018 101</b>
3 & 4 Lever assembly	<b>0760 018 103</b>
5 to 8 Valve bonnet assembly	<b>0760 018 106</b>
9 Upper arm	<b>0760 018 112</b>
10 & 11 Nozzle	<b>0760 018 113</b>
12 Body	<b>0760 018 115</b>
13 Hinge pin	<b>0760 018 116</b>
14 Spring	<b>0760 018 117</b>
15 Handle	<b>0760 018 118</b>

### Spares for Monocable

'O' Ring kit	<b>0760 018 121</b>
Clamp kit	<b>0760 018 125</b>
Conductor kit	<b>0760 018 126</b>
Hose cover	<b>0760 018 130</b>
Boot insulator	<b>0768 018 131</b>

Spares for K4000 Fig 21



# Gouging Torches



## Flair 600 and 1600

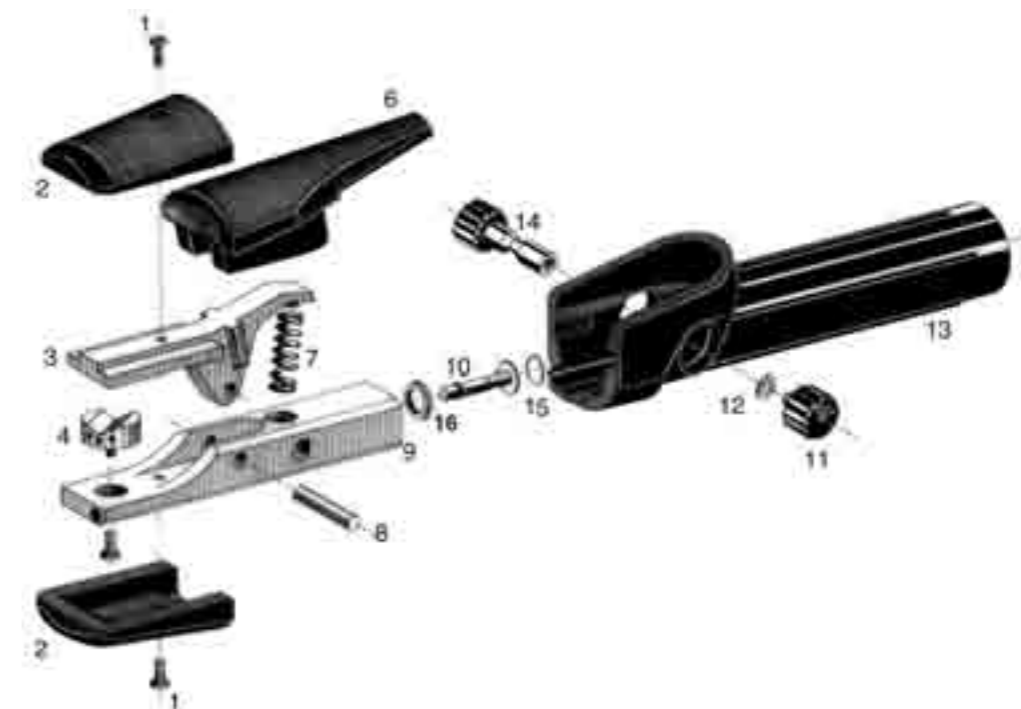
The Flair 600 arc air torch for carbon up to 10mm (3/4") and 4 x 15mm (5/32 x 9/16") rectangular. The Flair 1600 arc air torch for carbon up to 19mm (3/4") and 5 x 20mm (3/16 x 3/4") rectangular.

Flair 600, incl monocable	<b>0468 253 880</b>
Torch only	<b>0468 253 016</b>
Monocable only	<b>0468 253 015</b>
Flair 1600, incl monocable	<b>0468 253 881</b>
Torch only	<b>0468 253 036</b>
Monocable only	<b>0468 253 035</b>

### Spares for Flair 600 (Fig 22)

1 Set of screws	<b>0468 253 001</b>
2 Insulating Caps	<b>0468 253 002</b>
3 Brass Lever	<b>0468 253 003</b>
4 Injection Nozzle	<b>0160 580 001</b>
6 Lever Insulation	<b>0468 253 006</b>
7 Spring	<b>0468 253 007</b>
8 Hinge Pin	<b>0468 253 008</b>
9 Body	<b>0468 253 005</b>
10 Valve	<b>0468 253 010</b>
15 & 16 Valve Seat	<b>0468 253 009</b>
11,12,14 Push Button + Link	<b>0468 253 014</b>
13 Handle	<b>0468 253 013</b>

Spares for Flair 600 Fig 22



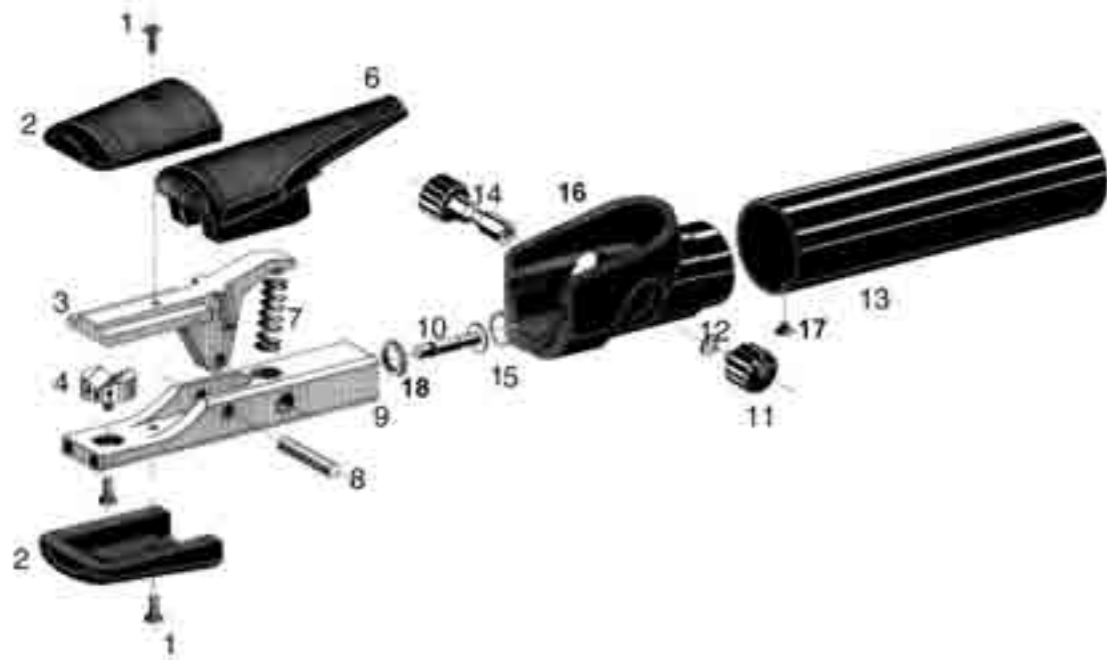


# Gouging Torches

## Spares for Flair 1600 (Fig 23)

1	Set of screws	<b>0468 253 001</b>
2	Insulating Caps	<b>0468 253 002</b>
3	Brass Lever	<b>0468 253 023</b>
4	Injection Nozzle	<b>0468 253 024</b>
6	Lever Insulation	<b>0468 253 006</b>
7	Spring	<b>0468 253 027</b>
8	Hinge Pin	<b>0468 253 008</b>
9	Body	<b>0468 253 025</b>
10	Valve	<b>0468 253 010</b>
15 & 18	Valve Seat	<b>0468 253 009</b>
11,12,14	Push Button + Link	<b>0468 253 014</b>
13,16,17	Handle	<b>0468 253 033</b>

Spares for Flair 1600 Fig 23



# Gouging Carbons



## OK Carbon™



Arc air gouging with carbon electrodes and compressed air is the fastest and cheapest process for cutting/gouging material in conjunction with repairs and similar processes. A carbon electrode is used to melt the material and, at the same time, a powerful jet of air blows away the molten material. The compressed air also cools the carbon electrode. Carbon electrodes can be used for the arc air gouging of unalloyed and low-alloy steel, stainless steel, cast iron and other metals. A complete set of arc air gouging equipment consists of an arc air gouger, the Flair 600 or Flair 1600, alternatively the K4000 with mono cable. OK Carbon™, ESAB's focused but comprehensive range of arc air carbons enables the user to gouge in a wide range of applications, within foundries, steel industry, shipbuilding, steel construction and in maintenance workshops. The OK Carbon™ range gives the user the highest possible efficiency by removal of metal per unit length or unit time.

DC Pointed, 4 x 305mm PK 100	<b>0700 007 002</b>
DC Pointed, 5 x 305mm PK 100	<b>0700 007 003</b>
DC Pointed, 6,35 x 305mm PK 200	<b>0700 007 004</b>
DC Pointed, 8 x 305mm PK 200	<b>0700 007 006</b>
DC Pointed, 10 x 305mm PK 100	<b>0700 007 007</b>
DC Pointed, 6,35 x 5,10mm PK 200	<b>0700 007 104</b>
DC Pointed, 8 x 510mm PK 150	<b>0700 007 106</b>
DC Pointed, 10 x 510mm PK 5	<b>0700 007 107</b>
DC Pointed, 13 x 455mm PK 50	<b>0700 007 108</b>
DC Jointed, 10 x 430mm PK 100	<b>0700 007 410</b>
DC Jointed, 13 x 430mm PK 50	<b>0700 007 411</b>
DC Jointed, 16 x 430mm PK 50	<b>0700 007 412</b>
DC Jointed, 19 x 430mm PK 25	<b>0700 007 413</b>
AC Jointed, 4 x 355mm PK 100	<b>0700 007 414</b>
AC Jointed, 5 x 355mm PK 50	<b>0700 007 415</b>
AC Jointed, 6,35 x 355mm PK 50	<b>0700 007 416</b>
AC Jointed, 8 x 355mm PK 50	<b>0700 007 417</b>
AC Jointed, 9,5 x 355mm PK 50	<b>0700 007 418</b>
DC Rectangular, 4 x 15 x 305mm PK 125	<b>0114 800 112</b>
DC Rectangular, 5 x 15 x 305mm PK 125	<b>0700 007 502</b>
DC Rectangular, 5 X 20 X 305mm PK 100	<b>0700 007 503</b>